



NORTHWESTERN COLLEGE
FACT BOOK FALL 2015

101 7TH STREET SW
ORANGE CITY, IOWA 51041
(712) 707-7000
[HTTP://WWW.NWCIOWA.EDU](http://www.nwciowa.edu)

Prepared by Mike Wallinga, Director of Institutional Research

NORTHWESTERN COLLEGE FACT BOOK

13th Annual Edition, Fall 2015

TABLE OF CONTENTS

Mission, organization, and accreditation	p. 2
Enrollment	p. 4
First-year student characteristics	p. 21
Retention and graduation	p. 30
Co-curricular participation	p. 41
Academic support	p. 44
Personnel	p. 45
Financial trends	p. 47

MISSION AND VISION

Mission

Northwestern College is a Christian academic community engaging students in courageous and faithful learning and living that empowers them to follow Christ and pursue God's redeeming work in the world.

Vision for Learning

At Northwestern College, we are committed to integrating faith with learning in the classroom, athletic arena, performance venue, and residence hall. We pursue excellence in all areas because it honors God and furthers Christ's kingdom. A Northwestern education prepares students to:

- **Trust, love and worship God**
Northwestern graduates understand learning is an act of worship. They trust that all truth is God's truth, which frees them to pursue any academic inquiry. They strive to love what God loves, valuing diverse people, cultures and ideas.
- **Engage ideas**
Northwestern graduates are lifelong learners who listen, read, question and evaluate. They add their voices to the wider conversation through disciplined and imaginative speech, writing, art and performance.
- **Connect knowledge and experience**
Northwestern graduates are knowledgeable and wise. They take their excellent classroom learning into their communities, seeking opportunities for meaningful involvement and service.
- **Respond to God's call**
Northwestern graduates explore and discover their gifts—and then use them in service to God, humanity and creation.

ORGANIZATION

Board of Trustees

Northwestern College is governed by a Board of Trustees consisting of 34 members, many of whom represent the Reformed Church in America (RCA). The board is responsible for maintaining the mission and identity of the college, approving policy, and providing a strategic vision for the future.

President's Administrative Council for 2015-2016

Mr. Gregory Christy	President
Mr. Doug Beukelman	Vice President for Financial Affairs
Mr. Mark Bloemendaal	Dean of Enrollment and Marketing
Dr. Kent Eaton	Interim Provost
Mrs. Julie Vermeer Elliott	Dean of Students
Dr. Adrienne Forgette	Dean of Faculty
Mr. Jay Wielenga	Vice President for Advancement
Dr. Earl Woudstra	Athletic Director

ACCREDITATION

Northwestern is fully accredited by the Higher Learning Commission of the North Central Association of Colleges and Schools.

Department/program accreditations include the following:

- Accredited by the Commission on Accreditation of Athletic Training Education
- Accredited by the International Assembly for Collegiate Business Education
- 1 of 4 Iowa colleges accredited by the National Council for Accreditation of Teacher Education
- Accredited by the Commission on Collegiate Nursing Education
- 1 of 10 Iowa colleges with baccalaureate programs accredited by the Council on Social Work Education

ENROLLMENT – Historical Profile

	2011	2012	2013	2014	2015
Total Enrollment	1211	1241	1233	1205	1210
<i>Total FTE</i>	1182	1198	1174	1145	1153
<i>% FTE of Total Enrollment</i>	97.6%	96.5%	95.2%	95.0%	95.3%
Entering Cohort	324	302	284	315	260
<i>Female</i>	186	162	149	178	158
<i>Male</i>	138	140	135	137	102
Entering Transfers	40	52	40	34	32
Returning Students	9	10	7	13	4
Full Time	1163	1169	1133	1100	1063
<i>% of Total Enrollment</i>	96%	94%	92%	91%	88%
Part Time	48	72	100	105	147
<i>% of Total Enrollment</i>	4%	6%	8%	9%	12%
<i>Freshman</i>	334	322	300	327	270
<i>Sophomore</i>	271	259	235	233	256
<i>Junior</i>	272	287	285	248	262
<i>Senior</i>	283	304	330	301	292
<i>Graduate</i>					90
<i>Other/Unclassified</i>	51	69	83	96	40
<i>Post Baccalaureate</i>	5	27	29	50	7
<i>High School/Post-Secondary</i>	11	6	4	5	7
<i>ESL Certificate Program</i>	6	4	1	2	1
Degree Seeking	1184	1195	1147	1113	1173
<i>% of Total</i>	98%	96%	93%	92%	97%
Non-Degree Seeking	27	46	86	92	37
<i>% of Total</i>	2%	4%	7%	8%	3%
Iowa Students	640	649	627	649	685
<i>% of Total</i>	53%	52%	51%	54%	57%
All Other States	535	556	573	516	487
<i>% of Total</i>	44%	45%	46%	43%	40%
International Students	36	36	33	40	38
<i>% of Total</i>	3%	3%	3%	3%	3%
Reformed Church Affiliation	308	303	286	265	260
<i>% of Total</i>	25%	24%	23%	22%	21%
All Other Denominations	903	920	851	774	753
<i>% of Total</i>	75%	74%	69%	64%	62%
Female Students	700	709	701	709	730
<i>% of Total</i>	58%	57%	57%	59%	60%
Male Students	511	532	532	496	480
<i>% of Total</i>	42%	43%	43%	41%	40%
Under 18	27	19	27	11	18
<i>% of Total</i>	2%	2%	2%	1%	1%
18-24	1150	1176	1145	1112	1075
<i>% of Total</i>	95%	95%	93%	92%	89%
25-39	18	26	44	66	85
<i>% of Total</i>	2%	2%	4%	6%	7%
40 and Over	12	15	14	16	32
<i>% of Total</i>	1%	1%	1%	1%	3%
Unknown	4	5	3	0	0
<i>% of Total</i>	0%	0.4%	0%	0.0%	0%

ENROLLMENT – Race/Ethnicity and International Residency

Citizenship and Race/Ethnicity	2011	2012	2013	2014	2015	2015 %
U.S. Citizens/Permanent Residents	1175	1205	1200	1165	1172	96.9%
White	1096	1078	1041	999	1010	83.5%
Hispanic/Latino of Any Race	43	56	69	61	51	4.2%
American Indian/Alaska Native	5	8	4	2	0	0%
Asian	10	11	11	13	12	1.0%
Black or African American	17	25	26	17	23	1.9%
Native Hawaiian or Pacific Islander	0	0	0	0	1	0.1%
Two or more races	2	11	19	24	25	2.1%
Unknown	2	16	30	49	50	4.1%
Non-US Residents	36	36	33	40	38	3.1%
Afghanistan	0	0	0	0	1	
Australia	0	0	0	2	1	
Bahrain	3	1	1	1	1	
Brazil	2	2	2	2	1	
Canada	5	3	3	1	1	
China	0	0	0	1	1	
Colombia	1	1	1	2	2	
Congo	0	1	1	1	0	
Democratic Republic of Congo	0	1	0	0	0	
Ethiopia	1	1	0	0	0	
Germany	0	0	1	1	1	
Ghana	0	1	1	1	1	
Greece	0	0	1	1	1	
Hong Kong	1	0	0	0	0	
Hungary	0	0	1	1	1	
India	1	0	0	0	0	
Indonesia	0	1	1	1	1	
Japan	8	7	3	8	3	
Kenya	2	2	1	1	0	
Lithuania	0	0	0	0	0	
Malaysia	0	0	1	1	1	
Mauritius	0	1	1	0	1	
Mexico	0	1	2	2	3	
Republic of Moldova	1	1	0	0	0	
Nepal	2	3	1	2	2	
Nicaragua	0	0	0	1	1	
Nigeria	0	0	0	0	3	
Oman	2	1	1	0	0	
Philippines	1	1	1	0	0	
Qatar	0	1	0	0	0	
Romania	1	0	1	1	1	
South Korea	3	1	1	0	0	
Spain	0	0	0	0	1	
Taiwan	1	1	1	2	1	
United Kingdom	1	2	3	4	5	
Vietnam	0	1	2	2	3	
Zimbabwe	0	1	1	1	0	
Totals:	1211	1241	1233	1205	1210	100%

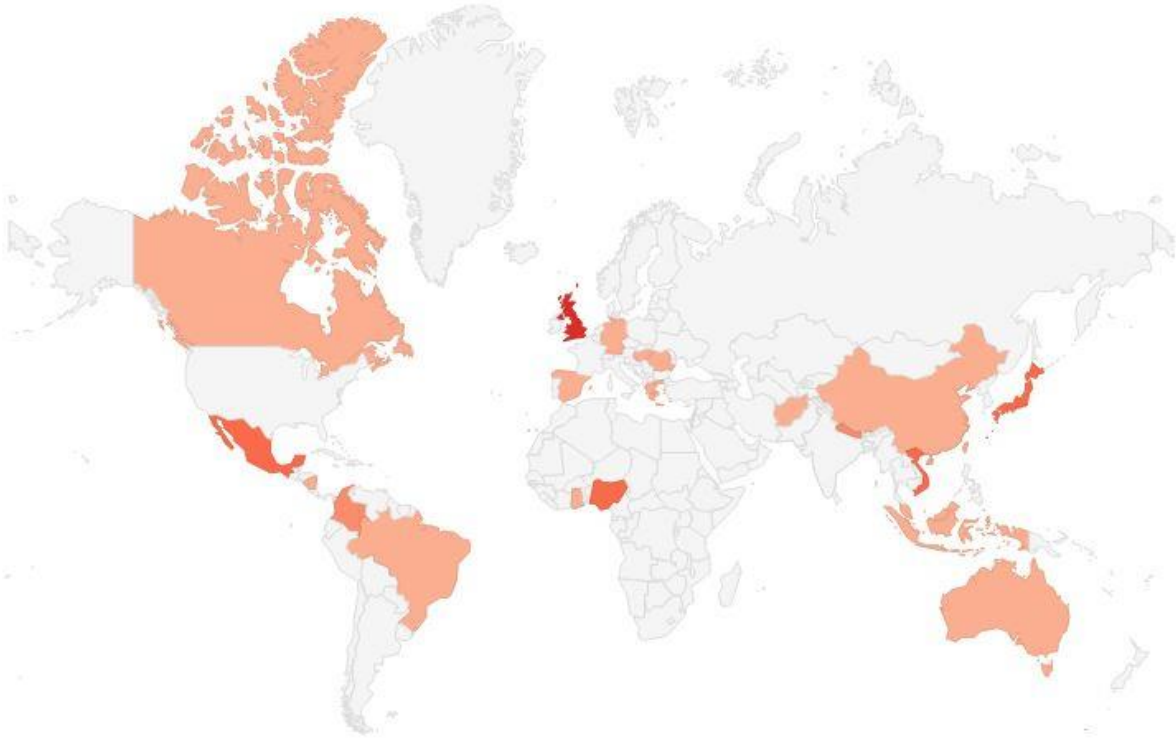
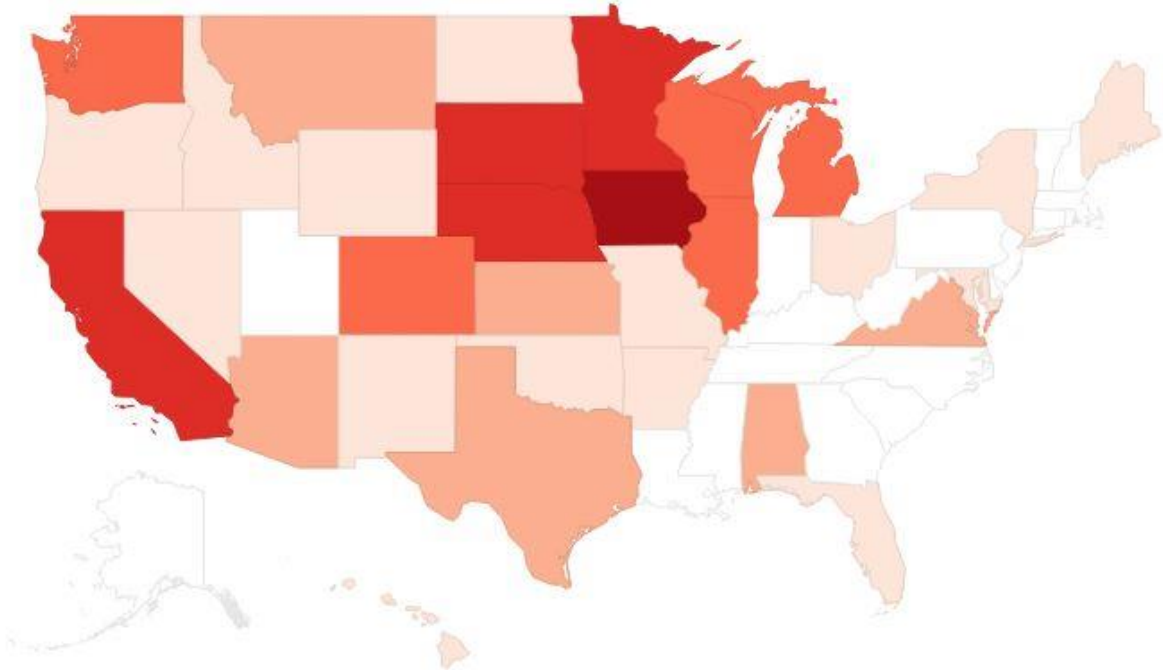
ENROLLMENT – US Residency by State

	2011	%	2012	%	2013	%	2014	%	2015	%
Iowa	640	54.5%	649	53.9%	627	52.3%	649	55.7%	685	58.4%
Great Lakes States	47	4.0%	56	4.6%	59	4.9%	55	4.7%	49	4.1%
<i>Illinois</i>	17	1.4%	21	1.7%	22	1.8%	23	2.0%	17	1.4%
<i>Indiana</i>	2	0.2%	2	0.2%	1	0.1%	1	0.1%	0	0%
<i>Michigan</i>	15	1.2%	16	1.3%	15	1.3%	11	0.9%	14	1.2%
<i>Ohio</i>	1	0.1%	2	0.2%	2	0.2%	2	0.2%	1	0.1%
<i>Wisconsin</i>	12	1.0%	15	1.2%	19	1.6%	18	1.5%	17	1.4%
Midwest States	332	28.3%	312	25.9%	293	24.4%	270	23.2%	276	23.6%
<i>Kansas</i>	7	0.6%	7	0.6%	7	0.6%	4	0.3%	6	0.5%
<i>Minnesota</i>	148	11.8%	133	11.0%	114	9.5%	90	7.7%	86	7.3%
<i>Missouri</i>	4	0.3%	4	0.3%	5	0.4%	4	0.3%	3	0.3%
<i>Nebraska</i>	65	5.2%	67	5.6%	59	4.9%	67	5.8%	80	6.8%
<i>North Dakota</i>	8	0.6%	4	0.3%	2	0.2%	3	0.3%	3	0.3%
<i>South Dakota</i>	100	8.0%	97	8.0%	106	8.8%	102	8.8%	98	8.4%
Eastern States	8	0.7%	7	0.6%	10	0.8%	8	0.7%	4	0.4%
<i>Connecticut</i>	0	0.0%	0	0.0%	0	0.0%	1	0.1%	0	0%
<i>Delaware</i>	0	0.0%	0	0.0%	0	0.0%	0	0.0%	0	0%
<i>Massachusetts</i>	0	0.0%	0	0.0%	0	0.0%	0	0.0%	0	0%
<i>Maryland</i>	1	0.1%	3	0.2%	3	0.3%	3	0.3%	2	0.2%
<i>Maine</i>	1	0.1%	0	0.0%	0	0.0%	1	0.1%	1	0.1%
<i>New Hampshire</i>	0	0.0%	1	0.1%	0	0.0%	1	0.1%	0	0%
<i>New Jersey</i>	2	0.2%	0	0.0%	0	0.0%	0	0.0%	0	0%
<i>New York</i>	2	0.2%	2	0.2%	3	0.3%	2	0.2%	1	0.1%
<i>Pennsylvania</i>	2	0.2%	1	0.1%	4	0.3%	0	0.0%	0	0%
<i>Rhode Island</i>	0	0.0%	0	0.0%	0	0.0%	0	0.0%	0	0%
<i>Vermont</i>	0	0.0%	0	0.0%	0	0.0%	0	0.0%	0	0%

ENROLLMENT – US Residency by State

	2011	%	2012	%	2013	%	2014	%	2015	%
Western US	124	10.6%	158	13.1%	185	15.4%	163	14.0%	136	11.7%
<i>Alaska</i>	1	0.1%	0	0.0%	0	0.0%	0	0.0%	0	0%
<i>Arizona</i>	6	0.5%	8	0.7%	10	0.8%	12	1.0%	9	0.8%
<i>California</i>	66	5.3%	85	7.1%	105	8.8%	86	7.4%	72	6.1%
<i>Colorado</i>	24	1.9%	32	2.7%	39	3.3%	36	3.1%	30	2.6%
<i>Hawaii</i>	0	0.0%	0	0.0%	1	0.1%	2	0.2%	2	0.2%
<i>Idaho</i>	6	0.5%	6	0.5%	3	0.3%	3	0.3%	3	0.3%
<i>Montana</i>	0	0.0%	0	0.0%	1	0.1%	3	0.3%	4	0.3%
<i>New Mexico</i>	0	0.0%	0	0.0%	0	0.0%	0	0.0%	1	0.1%
<i>Nevada</i>	2	0.2%	3	0.2%	1	0.1%	1	0.1%	2	0.2%
<i>Oregon</i>	3	0.2%	4	0.3%	5	0.4%	3	0.3%	2	0.2%
<i>Utah</i>	1	0.1%	1	0.1%	1	0.1%	0	0.0%	0	0%
<i>Washington</i>	14	1.1%	18	1.5%	18	1.5%	15	1.3%	10	0.8%
<i>Wyoming</i>	1	0.1%	1	0.1%	1	0.1%	2	0.2%	1	0.1%
Southern States	24	2.0%	23	1.9%	26	2.2%	20	1.7%	22	1.9%
<i>Alabama</i>	1	0.1%	1	0.1%	2	0.2%	1	0.1%	5	0.4%
<i>Arkansas</i>	0	0.0%	0	0.0%	0	0.0%	0	0.0%	1	0.1%
<i>Florida</i>	5	0.4%	7	0.6%	6	0.5%	3	0.3%	2	0.2%
<i>Georgia</i>	1	0.1%	1	0.1%	1	0.1%	2	0.2%	0	0%
<i>Kentucky</i>	0	0.0%	0	0.0%	0	0.0%	1	0.1%	0	0%
<i>Louisiana</i>	2	0.2%	1	0.1%	1	0.1%	1	0.1%	0	0%
<i>Mississippi</i>	0	0.0%	0	0.0%	0	0.0%	0	0.0%	0	0%
<i>North Carolina</i>	0	0.0%	0	0.0%	0	0.0%	0	0.0%	0	0%
<i>Oklahoma</i>	1	0.1%	1	0.1%	1	0.1%	0	0.0%	1	0.1%
<i>South Carolina</i>	1	0.1%	0	0.0%	0	0.0%	0	0.0%	0	0%
<i>Tennessee</i>	2	0.2%	2	0.2%	1	0.1%	0	0.0%	0	0%
<i>Texas</i>	6	0.5%	6	0.5%	11	0.9%	8	0.7%	9	0.8%
<i>Virginia</i>	5	0.4%	4	0.3%	3	0.3%	4	0.3%	4	0.3%
<i>West Virginia</i>	0	0.0%	0	0.0%	0	0.0%	0	0.0%	0	0%
State Totals:	1175	100%	1205	100%	1200	100%	1165	100%	1172	100%

ENROLLMENT – Residency Visualization



Note: Darker shades of color indicate higher enrollment.

ENROLLMENT – Religious Affiliation

	2011	%	2012	%	2013	%	2014	%	2015	%
Reformed	308	25.4%	303	24.4%	286	23.2%	265	22.0%	260	21.5%
Other Reformed	153	12.6%	135	10.9%	108	8.8%	104	8.6%	100	8.2%
<i>Christian Reformed</i>	107	8.8%	90	7.3%	64	5.2%	66	5.5%	62	5.1%
<i>Protestant Reformed</i>	4	0.3%	3	0.2%	1	0.1%	0	0.0%	1	0.1%
<i>United Reformed</i>	6	0.5%	7	0.6%	3	0.2%	3	0.2%	4	0.3%
<i>Presbyterian</i>	34	2.8%	33	2.7%	38	3.1%	32	2.7%	27	2.2%
<i>Netherlands Reformed</i>	1	0.1%	2	0.2%	2	0.2%	3	0.2%	5	0.4%
<i>Other Reformed</i>	1	0.1%	0	0.0%	0	0.0%	0	0.0%	1	0.1%
Other Protestant	600	49.5%	614	49.5%	590	47.9%	574	47.6%	569	47.0%
<i>Assembly of God</i>	16	1.3%	15	1.2%	17	1.4%	20	1.6%	20	1.6%
<i>Baptist</i>	92	7.6%	95	7.7%	86	7.0%	81	6.7%	85	7.0%
<i>Berean</i>	4	0.3%	4	0.3%	1	0.1%	2	0.2%	1	0.1%
<i>Bible Church/Fundamentals</i>	4	0.3%	4	0.3%	6	0.5%	9	0.7%	9	0.7%
<i>Brethren</i>	1	0.1%	1	0.1%	1	0.1%	2	0.2%	2	0.2%
<i>Christian & Mission Alliance</i>	25	2.1%	23	1.9%	28	2.3%	29	2.4%	29	2.4%
<i>Church of Christ</i>	13	1.1%	16	1.3%	15	1.2%	21	1.7%	31	2.5%
<i>Church of Nazarene</i>	3	0.2%	3	0.2%	2	0.2%	2	0.2%	3	0.3%
<i>Congregational</i>	5	0.4%	7	0.6%	4	0.3%	3	0.2%	2	0.2%
<i>Episcopal</i>	1	0.1%	3	0.2%	2	0.5%	2	0.2%	2	0.2%
<i>Evangelical Covenant</i>	13	1.1%	11	0.9%	9	0.7%	6	0.5%	8	0.7%
<i>Evangelical Free</i>	107	8.8%	102	8.2%	98	7.9%	94	7.8%	96	7.9%
<i>Friends/Quaker</i>	3	0.2%	2	0.2%	0	0.0%	0	0.0%	1	0.1%
<i>Lutheran</i>	112	9.2%	113	9.1%	103	8.4%	102	8.4%	113	9.3%
<i>Mennonite</i>	9	0.7%	8	0.6%	9	0.7%	9	0.7%	9	0.7%
<i>Methodist/Wesleyan</i>	52	4.3%	49	3.9%	57	4.6%	56	4.6%	52	4.3%
<i>Non-denominational</i>	134	11.1%	149	12.0%	146	11.8%	132	11.0%	101	8.4%
<i>Pentecostal</i>	6	0.5%	9	0.7%	6	0.5%	4	0.3%	5	0.4%
Roman Catholic	60	5.0%	62	5.0%	75	6.1%	76	6.3%	64	5.3%
Other	25	2.1%	28	2.3%	30	2.4%	20	1.7%	20	1.7%
Not Indicated	65	5.4%	99	8.0%	144	11.7%	166	13.8%	197	16.3%
Totals:	1211	100%	1241	100%	1233	100%	1205	100%	1210	100%

ENROLLMENT – Classification by Gender and FT/PT Status

	2011		2012		2013		2014		2015	
	M	F	M	F	M	F	M	F	M	F
Freshman Cohort	324		302		285		315		260	
<i>Full Time</i>	138	186	140	162	136	149	137	178	102	158
<i>Part Time</i>	0	0	0	0	0	0	0	0	0	0
Returning Freshmen	10		20		15		12		10	
<i>Full Time</i>	5	5	7	13	10	5	9	3	6	2
<i>Part Time</i>	0	0	0	0	0	0	0	0	0	2
Sophomores	271		259		235		233		256	
<i>Full Time</i>	123	146	117	141	107	128	104	129	117	137
<i>Part Time</i>	2	0	0	1	0	0	0	0	0	2
Juniors	272		287		285		248		262	
<i>Full Time</i>	124	147	134	150	126	157	115	126	120	138
<i>Part Time</i>	0	1	0	3	1	1	1	6	1	3
Seniors	283		304		330		301		292	
<i>Full Time</i>	97	175	118	171	121	188	107	175	101	168
<i>Part Time</i>	6	5	3	12	10	11	10	9	12	11
Graduate									90	
<i>Full Time</i>									0	1
<i>Part Time</i>									6	83
Unclassified	51		69		83		96		40	
<i>Full Time</i>	4	13	5	11	0	6	3	14	5	8
<i>Part Time</i>	12	22	8	45	21	56	10	69	10	17
Total Enrollment:	1211		1241		1233		1205		1210	
<i>Full Time</i>	491	672	521	648	500	633	475	625	451	612
<i>Part Time</i>	20	28	11	61	32	68	21	84	29	118
Student FTE	1182		1198		1174		1145		1153	
Faculty FTE	90.5		90.1		92.4		92.9		90.1	
Stu:Fac Ratio	13.1		13.3		12.7		12.3		12.8	

ENROLLMENT – Total Student Credit Hours by Department

Department	2012		2013		2014		2015 with IGE (sorted)		2015 w/o IGE	
	Hrs	%	Hrs	%	Hrs	%	Hrs	%	Hrs	%
Education	1698	9.4%	1706	9.5%	1776	10.2%	2000	11.6%	2000	11.6%
Business **	1709	9.4%	1647	9.2%	1689	9.7%	1667	9.7%	1667	9.7%
Religion *	1746	9.6%	1791	10%	1620	9.3%	1619	9.4%	1619	9.4%
Kinesiology	1163	6.4%	1391	7.7%	1336	7.7%	1389	8.1%	1389	8.1%
Int. Gen Ed	412	2.3%	1032	5.7%	1306	7.5%	1080	6.3%		
Biology	1144	6.3%	1186	6.6%	1064	6.1%	1054	6.1%	1118	6.5%
Psychology	1257	6.9%	1084	6.0%	1020	5.8%	955	5.6%	1015	5.9%
Math	712	3.9%	763	4.2%	691	4.0%	866	5.0%	866	5.0%
MFL	1184	6.5%	1089	6.1%	891	5.1%	798	4.6%	798	4.6%
English ***	1240	6.8%	610	3.4%	672	3.9%	701	4.1%	1069	6.2%
Sociology	500	2.8%	636	3.5%	492	2.8%	675	3.9%	743	4.3%
Chemistry	672	3.7%	652	3.6%	614	3.5%	648	3.8%	648	3.8%
Nursing	523	2.9%	539	3.0%	607	3.5%	573	3.3%	573	3.3%
Art	623	3.4%	505	2.8%	509	2.9%	530	3.1%	530	3.1%
History	650	3.6%	674	3.7%	560	3.2%	516	3.0%	576	3.4%
Philosophy	538	3.0%	588	3.3%	536	3.1%	472	2.7%	472	2.7%
Music	510	2.8%	463	2.6%	509	2.9%	395.25	2.3%	395.25	2.3%
Computer Sci.	357	2.0%	324	1.8%	354	2.0%	283	1.6%	283	1.6%
Theatre ***	546	3.0%	367.5	2.0%	244	1.4%	272.5	1.6%	468.5	2.7%
Social Work	228	1.3%	261	1.5%	277	1.6%	250	1.5%	306	1.8%
Communications	311	1.7%	299	1.7%	233	1.3%	196	1.1%	196	1.1%
Physics	150	0.8%	113	0.6%	176	1.0%	124	0.7%	124	0.7%
Political Sci.	254	1.4%	272	1.5%	264	1.5%	108	0.6%	316	1.8%
Totals:	18127	100%	17992.5	100%	17440	100%	17171.75	100%	17171.75	100%

Notes:

* Includes Religion and Christian Education

** Includes Business, Accounting, and Economics

*** Decrease after 2012 is largely due to First Year Seminar being counted under the IGE department

ENROLLMENT – Duplicated Headcount by Department

Department	2012		2013		2014		2015 with IGE (sorted)		2015 w/o IGE	
	Hrs	%	Hrs	%	Hrs	%	Hrs	%	Hrs	%
Kinesiology	628	9.5%	699	10.6%	671	10.6%	705	11.5%	705	11.5%
Education	603	9.1%	607	9.2%	632	10.0%	696	11.3%	696	11.3%
Biology	545	8.2%	559	8.5%	507	8.0%	496	8.1%	512	8.3%
Business **	449	6.8%	464	7.0%	451	7.1%	463	7.5%	463	7.5%
Religion *	475	7.2%	480	7.3%	452	7.1%	430	7.0%	430	7.0%
Music	464	7.0%	478	7.2%	441	7.0%	380	6.2%	380	6.2%
Chemistry	335	5.1%	326	4.9%	307	4.9%	323	5.3%	323	5.3%
Integrated Gen Ed	103	1.6%	298	4.5%	361	5.7%	297	4.8%		
MFL	429	6.5%	384	5.8%	321	5.1%	289	4.7%	289	4.7%
Math	234	3.5%	256	3.9%	231	3.7%	283	4.6%	283	4.6%
Nursing	256	3.9%	249	3.8%	291	4.6%	266	4.3%	266	4.3%
Psychology	326	4.9%	283	4.3%	268	4.2%	250	4.1%	265	4.3%
English	335	5.1%	187	2.8%	179	2.8%	191	3.1%	310	5.0%
Art	228	3.4%	176	2.7%	178	2.8%	170	2.8%	170	2.8%
Sociology	125	1.9%	159	2.4%	123	1.9%	168	2.7%	185	3.0%
Theatre/Speech	274	4.1%	197	3.0%	130	2.1%	141	2.3%	190	3.1%
History	209	3.2%	210	3.2%	179	2.8%	129	2.1%	144	2.3%
Computer Science	141	2.1%	142	2.2%	142	2.2%	123	2.0%	123	2.0%
Philosophy	135	2.0%	147	2.2%	134	2.1%	118	1.9%	118	1.9%
Social Work	89	1.3%	77	1.2%	88	1.4%	72	1.2%	86	1.4%
Physics	74	1.1%	55	0.5%	88	1.4%	62	1.0%	62	1.0%
Communications	103	1.6%	101	1.5%	82	1.3%	61	1.0%	61	1.0%
Political Science	72	1.1%	68	1.0%	66	1.0%	27	0.4%	79	1.3%
Totals:	6632	100%	6602	100%	6322	100%	6140	100%	6140	100%

Notes:

*- Includes Religion and Christian Education

** - Includes Business, Accounting, and Economics

ENROLLMENT – Undergraduate Majors

Department/Majors	2011	%	2012	%	2013	%	2014	%	2015	%
Art	32	2.4%	46	3.1%	33	2.3%	30	2.2%	28	2.2%
<i>Art</i>	18	1.3%	22	1.5%	13	0.9%	12	0.9%	12	0.9%
<i>Art-Graphic Design</i>	14	1.0%	24	1.6%	20	1.4%	18	1.3%	16	1.3%
Biology	132	9.9%	137	9.2%	127	8.8%	125	9.2%	114	8.9%
<i>Biology</i>	10	0.7%	10	0.7%	9	0.6%	21	1.5%	27	2.1%
<i>Biology Ecological Science</i>	5	0.4%	12	0.8%	8	0.6%	10	0.7%	9	0.7%
<i>Biology Health Professions</i>	105	7.9%	106	7.1%	98	6.8%	87	6.4%	74	5.8%
<i>Biology Teaching</i>	11	0.8%	9	0.6%	7	0.5%	2	0.1%	0	0.0%
<i>Genetics, Molecular, Cell Bio</i>									2	0.2%
<i>Medical Laboratory Science</i>	1	0.1%	0	0.0%	5	0.3%	5	0.4%	2	0.2%
Business	192	14.4%	232	15.6%	211	14.7%	215	15.8%	225	17.6%
<i>Accounting</i>	46	3.4%	50	3.4%	44	3.1%	49	3.6%	37	2.9%
<i>Bus Admin-Ag Business</i>	10	0.7%	13	0.9%	9	0.6%	12	0.9%	16	1.3%
<i>Bus Admin-Finance</i>	20	1.5%	26	1.8%	17	1.2%	17	1.2%	27	2.1%
<i>Bus Admin-General</i>	60	4.5%	84	5.7%	73	5.1%	69	5.1%	65	5.1%
<i>Bus Admin-Human Res</i>	1	0.1%	7	0.5%	5	0.3%	5	0.4%	6	0.5%
<i>Bus Admin-Management</i>	20	1.5%	17	1.1%	28	1.9%	29	2.1%	38	3.0%
<i>Bus Admin-Marketing</i>	13	1.0%	12	0.8%	14	1.0%	16	1.2%	23	1.8%
<i>Business Education</i>	12	0.9%	11	0.7%	14	1.0%	10	0.7%	6	0.5%
<i>Economics</i>	10	0.7%	12	0.8%	7	0.5%	8	0.6%	7	0.5%
Chemistry	18	1.3%	25	1.7%	20	1.4%	17	1.2%	21	1.7%
<i>Biochemistry</i>									1	0.1%
<i>Chemistry</i>	18	1.3%	25	1.7%	20	1.4%	17	1.2%	20	1.6%
Communications	41	3.1%	44	3.0%	43	3.0%	33	2.4%	26	2.0%
<i>Communication Studies</i>	1	0.1%								
<i>Cinema and Digital Video</i>	2	0.1%								
<i>Journalism</i>	8	0.6%	9	0.6%	10	0.7%	9	0.7%	8	0.6%
<i>Public Relations</i>	30	2.2%	35	2.4%	33	2.3%	24	1.8%	18	1.4%
Computer Science	37	2.8%	31	2.1%	36	2.5%	26	1.9%	25	2.0%
<i>Computer Science</i>	24	1.8%	19	1.3%	21	1.5%	19	1.4%	19	1.5%
<i>Computer Info. Systems</i>	13	1.0%	12	0.8%	15	1.0%	7	0.5%	6	0.5%
Elementary Education	148	11.1%	153	10.3%	147	10.2%	150	11.0%	145	11.3%
English	47	3.5%	58	3.9%	49	3.4%	46	3.4%	40	3.2%
<i>English</i>			1	0.1%	1	0.1%	1	0.1%		
<i>English Teaching</i>	20	1.5%	19	1.3%	17	1.2%	22	1.6%	20	1.6%
<i>Literature</i>	10	0.7%	15	1.0%	10	0.7%	5	0.4%	5	0.4%
<i>Writing and Rhetoric</i>	17	1.3%	23	1.5%	21	1.5%	18	1.3%	15	1.2%
History	33	2.5%	41	2.8%	34	2.4%	35	2.6%	29	2.3%
Humanities	8	0.6%	5	0.3%	7	0.5%	5	0.4%	5	0.4%
<i>Humanities</i>	6	0.4%	5	0.3%	5	0.3%	4	0.3%	4	0.3%
<i>Student Initiated</i>	2	0.1%	0	0.0%	2	0.1%	1	0.1%	1	0.1%

ENROLLMENT – Undergraduate Majors

Dept/Majors	2011	%	2012	%	2013	%	2014	%	2015	%
Kinesiology	96	7.2%	142	9.6%	165	11.5%	156	11.5%	147	11.5%
<i>Physical Education</i>	24	1.8%	25	1.7%	29	2.0%	29	2.1%	31	2.4%
<i>Athletic Training</i>	18	1.3%	19	1.3%	23	1.6%	21	1.5%	26	2.0%
<i>Sport Mgmt-Coaching/Ath Adm</i>	8	0.6%	28	1.9%	27	1.9%	29	2.1%	22	1.7%
<i>Sport Management-Inform/Media</i>	1	0.1%	2	0.1%	2	0.1%	3	0.2%	3	0.2%
<i>Sport Management-Gen Business</i>	7	0.5%	19	1.3%	18	1.3%	18	1.3%	12	0.9%
<i>Exercise Science</i>	38	2.8%	49	3.3%	66	4.6%	56	4.1%	53	4.1%
Math	48	3.6%	57	3.8%	53	3.7%	54	4.0%	51	4.0%
<i>Actuarial Science</i>	13	1.0%	16	1.1%	15	1.0%	18	1.3%	18	1.4%
<i>Mathematics</i>	35	2.6%	41	2.8%	38	2.6%	36	2.6%	33	2.6%
Modern Foreign Language	58	4.3%	80	5.4%	75	5.2%	52	3.8%	43	3.4%
<i>Spanish</i>	50	3.7%	64	4.3%	60	4.2%	39	2.9%	27	2.1%
<i>Translation/Interpretation</i>	8	0.6%	16	1.1%	15	1.0%	13	1.0%	16	1.3%
Music	40	3.0%	39	2.6%	42	2.9%	34	2.5%	22	1.7%
<i>Modified Music</i>	6	0.4%	5	0.3%	5	0.3%	4	0.3%	3	0.2%
<i>Music</i>	27	2.0%	25	1.7%	25	1.7%	23	1.7%	12	0.9%
<i>Music Ministry</i>	7	0.5%	9	0.6%	12	0.8%	7	0.5%	7	0.6%
Nursing	67	5.0%	78	5.3%	76	5.3%	83	6.1%	82	6.4%
<i>Nursing</i>	67	5.0%	78	5.3%	72	5.0%	74	5.4%	66	5.2%
<i>Nursing (RN-to-BSN)</i>					4	0.3%	9	0.7%	16	1.3%
Philosophy	2	0.1%	4	0.3%	1	0.1%	1	0.1%	2	0.2%
Political Science	20	1.5%	18	1.2%	16	1.1%	9	0.7%	9	0.7%
Psychology	63	4.7%	77	5.2%	74	5.1%	60	4.4%	48	3.8%
Religion	62	4.6%	76	5.1%	51	3.5%	43	3.2%	39	3.0%
<i>Christian Ed and Youth Ministry</i>	37	2.8%	48	3.2%	36	2.5%	29	2.1%	26	2.0%
<i>Christian Ed/Youth & Adol Option</i>	1	0.1%	2	0.1%	0	0.0%	1	0.1%	1	0.1%
<i>Religion</i>	24	1.8%	26	1.8%	15	1.0%	13	1.0%	12	0.9%
Social Work	47	3.5%	38	2.6%	40	2.8%	42	3.1%	39	3.0%
Sociology/Criminal Justice	27	2.0%	27	1.8%	26	1.8%	37	2.7%	47	3.7%
<i>Criminal Justice</i>							18	1.3%	32	2.5%
<i>Sociology</i>	27	2.0%	27	1.8%	26	1.8%	19	1.4%	15	1.2%
Theatre/Speech	22	1.6%	30	2.0%	32	2.2%	25	1.8%	27	2.1%
<i>Theatre</i>	18	1.3%	24	1.6%	27	1.9%	22	1.6%	26	2.0%
<i>Theatre & Speech</i>	4	0.3%	6	0.4%	5	0.3%	3	0.2%	1	0.1%
Undecided*	97	7.3%	76	5.1%	81	5.6%	84	6.2%	66	5.2%
Totals:	1337		1484		1439		1361		1280	

* Note: The Undecided category includes students who are not able to officially declare a major until they gain admittance into their desired program, such as Nursing or Athletic Training.

ENROLLMENT – Undergraduate Minors

Dept/Minors	2011	%	2012	%	2013	%	2014	%	2015	%
Art	19	4.5%	21	4.8%	16	4.3%	10	2.9%	16	4.8%
<i>Art</i>	19	4.5%	18	4.1%	12	3.2%	8	2.3%	13	3.9%
<i>Art Administration</i>			3	0.7%	4	1.1%	2	0.6%	3	0.9%
Biology	8	1.9%	7	1.6%	8	0.6%	10	2.9%	8	2.4%
Business	50	12.0%	56	12.9%	42	11.2%	41	11.8%	50	14.9%
<i>Accounting</i>	7	1.7%	7	1.6%	10	2.7%	6	1.7%	11	3.3%
<i>Business Adm.</i>	34	8.1%	38	8.8%	25	6.7%	26	7.5%	32	9.5%
<i>Business Education</i>	1	0.2%	1	0.2%	0	0.0%	1	0.3%	0	0.0%
<i>Economics</i>	8	1.9%	10	2.3%	7	1.9%	8	2.3%	7	2.1%
Chemistry	18	4.3%	12	2.8%	16	4.3%	16	4.6%	12	3.6%
Communication Studies	19	4.5%	24	5.5%	23	6.1%	24	6.9%	13	3.9%
<i>Corporate Communications</i>	0	0.0%	0	0.0%	0	0.0%	1	0.3%	0	0.0%
<i>Cinema and Digital Video</i>	1	0.2%	1	0.2%	0	0.0%	0	0.0%	0	0.0%
<i>Journalism</i>	2	0.5%	4	0.9%	4	1.1%	6	1.7%	3	0.9%
<i>Public Relations</i>	11	2.6%	10	2.3%	10	2.7%	10	2.9%	6	1.8%
<i>Multi Media</i>	5	1.2%	9	2.1%	9	2.4%	7	2.0%	4	1.2%
Computer Science	2	0.5%	3	0.7%	4	1.1%	1	0.3%	0	0.0%
English	26	6.2%	17	3.9%	11	2.9%	10	2.9%	13	3.9%
<i>English Teaching</i>	3	0.7%	0	0.0%	1	0.3%	1	0.3%	1	0.3%
<i>Literature</i>	6	1.4%	6	1.4%	3	0.8%	2	0.6%	4	1.2%
<i>Writing & Rhetoric</i>	17	4.1%	11	2.5%	7	1.9%	7	2.0%	8	2.4%
History	10	2.4%	15	3.5%	11	2.9%	6	1.7%	6	1.8%
<i>General History</i>	9	2.2%	8	1.8%	8	2.1%	4	1.1%	5	1.5%
<i>American History</i>	1	0.2%	6	1.4%	2	0.5%	1	0.3%	0	0.0%
<i>World History</i>	0	0.0%	1	0.2%	1	0.3%	1	0.3%	1	0.3%
Humanities	1	0.2%	0	0.0%	0	0.0%	0	0.0%	0	0.0%
Kinesiology	24	5.7%	25	5.8%	12	3.2%	18	5.2%	21	6.3%
<i>Health (K-12)</i>	17	4.1%	19	4.4%	7	1.9%	12	3.4%	17	5.1%
<i>Physical Education</i>	7	1.7%	6	1.4%	5	1.3%	6	1.7%	4	1.2%
Mathematics	14	3.3%	15	3.5%	16	4.3%	16	4.6%	18	5.4%
<i>Mathematics</i>	11	2.6%	13	3.0%	13	3.5%	13	3.7%	15	4.5%
<i>Mathematics Teaching</i>	3	0.7%	2	0.5%	3	0.8%	3	0.9%	3	0.9%
Middle East Studies			1	0.2%	3	0.8%	1	0.3%	3	0.9%

ENROLLMENT – Undergraduate Minors

Dept/Minors	2011	%	2012	%	2013	%	2014	%	2015	%
Modern Foreign Language	57	13.4%	63	14.5%	62	16.6%	60	17.2%	41	12.2%
<i>French</i>	1	0.2%	1	0.2%	0	0.0%	0	0.0%	0	0.0%
<i>German</i>	5	1.2%	8	1.8%	10	2.7%	5	1.4%	3	0.9%
<i>Spanish</i>	43	10.1%	44	10.1%	41	11.0%	46	13.2%	32	9.5%
<i>Teaching English as 2nd Lang</i>	8	1.9%	10	2.3%	11	2.9%	9	2.6%	6	1.8%
Music	11	2.6%	13	3.0%	8	2.1%	9	2.6%	9	2.7%
<i>Music</i>	11	2.6%	11	2.5%	7	1.9%	4	1.1%	4	1.2%
<i>Music Ministry</i>			2	0.5%	1	0.3%	5	1.4%	5	1.5%
Philosophy	5	1.2%	6	1.4%	6	1.6%	4	1.1%	1	0.3%
<i>Philosophy</i>	3	0.7%	5	1.2%	4	1.1%	4	1.1%	1	0.3%
<i>Applied Ethics</i>	2	0.5%	1	0.2%	2	0.5%	0	0.0%	0	0.0%
Physics	4	1.0%	7	1.6%	6	1.6%	7	2.0%	4	1.2%
<i>Physics</i>	3	0.7%	7	1.6%	5	1.3%	6	1.7%	4	1.2%
<i>Physics Teaching</i>	1	0.2%	0	0.0%	1	0.3%	1	0.3%	0	0.0%
Political Science	9	2.2%	11	2.5%	6	1.6%	7	2.0%	7	2.1%
Psychology	48	11.5%	32	7.4%	40	10.7%	34	9.8%	37	11.0%
<i>Psychology</i>	41	9.8%	31	7.1%	37	9.9%	30	8.6%	35	10.4%
<i>Developmental Psychology</i>	7	1.7%	1	0.2%	3	0.8%	4	1.1%	2	0.6%
Religion	55	13.2%	77	17.7%	59	15.8%	47	13.5%	45	13.5%
<i>Christian Community Dev.</i>					4	1.1%	9	2.6%	9	2.7%
<i>Christian Ed/Youth Ministry</i>	10	2.4%	18	4.1%	16	4.3%	9	2.6%	8	2.4%
<i>Christian Mission</i>	28	6.7%	33	7.6%	27	7.2%	23	6.6%	17	5.1%
<i>Religion</i>	17	4.1%	16	3.7%	12	3.2%	6	1.7%	11	3.3%
Sociology	27	6.5%	24	5.5%	18	4.8%	20	5.7%	23	6.9%
<i>Sociology</i>	17	4.1%	10	2.3%	9	2.4%	6	1.7%	7	2.1%
<i>Criminal Justice</i>							3	0.9%	2	0.6%
<i>Cultural Studies</i>	10	2.4%	14	3.2%	9	2.4%	11	3.2%	14	4.2%
Theatre & Speech	17	4.1%	15	3.5%	7	1.9%	7	2.0%	8	2.4%
<i>Theatre</i>	13	3.1%	10	2.3%	4	1.1%	3	0.9%	5	1.5%
<i>Theatre & Speech</i>	4	1.0%	5	1.2%	3	0.8%	4	1.1%	3	0.9%
Totals:	424	100%	434	100%	374	100%	348	100%	335	100%

ENROLLMENT – Undergraduate Career Concentrations

Career Concentrations	2011	2012	2013	2014	2015
<i>Christian Theatre Ministries</i>	3	2	2	4	2
<i>Computer Science</i>	1	1	0	0	0
<i>Criminal Justice</i>	18	20	23	11	3
<i>Fitness Management</i>	13	10	12	9	10
<i>Mission Service</i>	5	0	0	0	0
<i>Neuroscience/Standard</i>	4	4	6	4	1
<i>Neuroscience/Concentration</i>	3	2	3	5	4
<i>Recreation</i>	1	1	0	0	0
<i>Sports Management</i>	15	12	8	9	8
<i>Strength and Conditioning</i>		4	13	25	21
Totals:	63	56	67	67	49

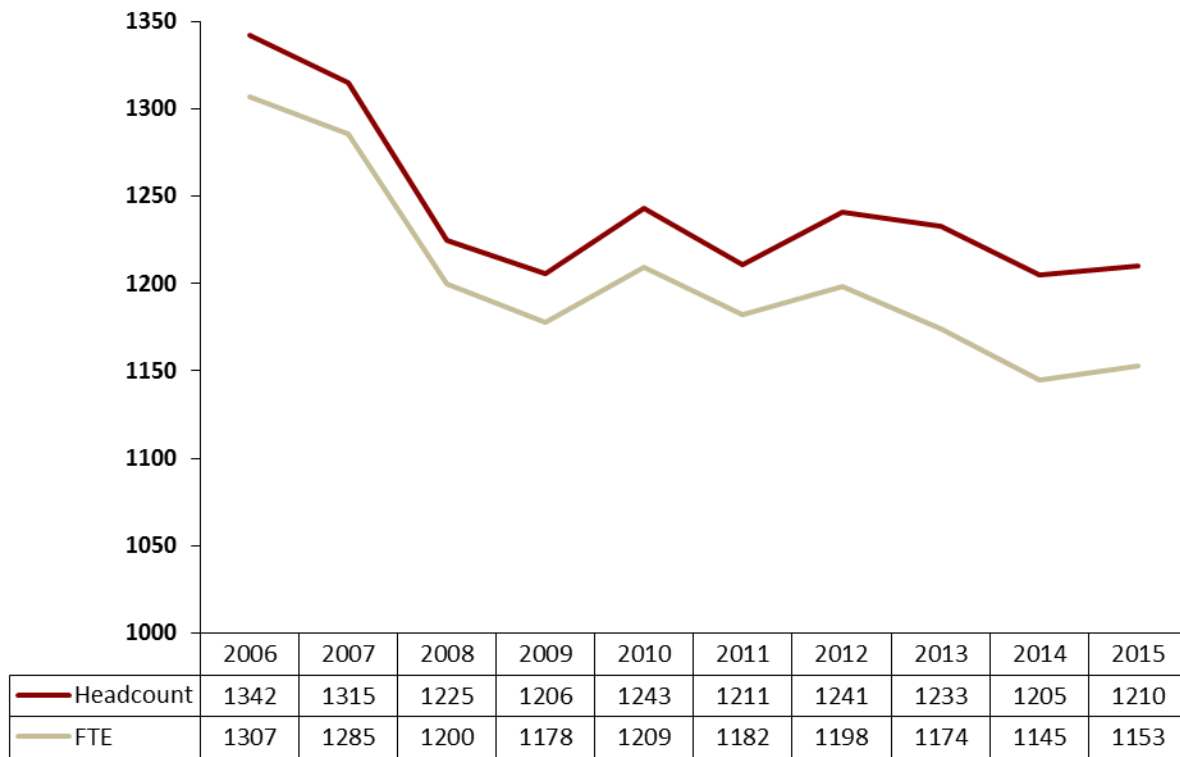
ENROLLMENT – Education Certifications and Endorsements

Certifications/Endorsements	2011	2012	2013	2014	2015
Certifications	265	244	241	240	237
<i>Elementary</i>	137	132	131	132	138
<i>Secondary</i>	99	84	83	85	78
<i>Vertical</i>	29	28	27	23	21
K-6 Endorsements	11	18	6	4	8
<i>K-6 in Art</i>	1	4	2	0	0
<i>K-6 in English</i>	4	2	1	2	1
<i>K-6 in History</i>	1	0	0	1	0
<i>K-6 in Math</i>	3	6	3	0	2
<i>K-6 in Music</i>	0	2	0	0	1
<i>K-6 in Physical Education</i>	1	2	0	1	2
<i>K-6 in Science</i>	0	1	0	0	2
<i>K-6 in Social Science</i>	0	0	0	0	0
<i>K-6 in Spanish</i>	1	1	0	0	0
<i>K-6 in Special Education</i>	0	0	0	0	0
K-12 Endorsements	10	27	17	13	20
<i>K-12 in Art</i>	1	3	2	2	5
<i>K-12 in Music</i>	1	5	3	2	2
<i>K-12 in Physical Education</i>	5	12	7	5	11
<i>K-12 in Spanish</i>	3	7	5	4	2
Coaching	145	134	109	112	112
Early Childhood	23	27	21	34	22
General Science	3	2	1	1	2
Instructional Strategist/K-6	21	25	18	25	28
Instructional Strategist/7-12	2	0	4	3	1
Instructional Strategist/K-12	6	9	8	10	5
Middle School	18	26	25	22	28
Reading	72	81	64	62	73
Teaching English as 2nd Lang	22	15	16	16	9
Unified Early Childhood	7	32	26	11	0
Early Child Int. Setting (UNDG)			11	36	6
Early Child Int. Setting (GRAD)					37
Alternative Endorsements	1	4	4	4	2
<i>American Government</i>	0	1	1	2	0
<i>American History</i>	0	0	0	0	0
<i>Biology</i>	0	0	0	0	0
<i>Chemistry</i>	1	1	1	0	1
<i>Economics</i>	0	1	1	1	0
<i>Physics</i>	0	0	0	0	0
<i>Psychology</i>	0	0	0	0	0
<i>Sociology</i>	0	1	1	1	0
<i>World History</i>	0	0	0	0	1
Totals:	606	644	571	593	590

ENROLLMENT – Online Offerings

	2012 SU	2012 FA	2013 SU	2013 FA	2014 SU	2014 FA	2015 SU	2015 FA
Duplicated Student Headcount	164	84	201	258	151	228	292	363
Art	4	0	7	0	0	0	4	0
Biology	11	0	0	0	9	0	14	0
Communication	0	0	0	0	0	8	0	0
Computer Science	0	0	8	6	8	11	4	25
Education	72	48	77	38	54	59	143	205
English	11	0	26	12	10	19	18	17
General Ed	0	0	0	3	4	1	20	0
History	8	14	5	0	0	0	4	0
Kinesiology	28	0	38	75	26	43	26	25
Nursing	0	0	0	4	0	31	7	52
Philosophy	4	0	11	0	14	0	10	0
Physics	0	0	0	0	0	10	0	0
Political Science	0	0	0	35	0	0	0	0
Psychology	3	15	9	19	5	31	4	22
Religion	17	0	11	12	2	0	29	17
Sociology	6	0	9	10	13	0	9	0
Spanish	0	7	0	44	6	15	0	0
Total Student Credit Hours	495	252	614	673	504	699	916	982
Art	16	0	28	0	0	0	16	0
Biology	44	0	0	0	36	0	56	0
Communication	0	0	0	0	0	16	0	0
Computer Science	0	0	22	18	24	33	12	25
Education	171	129	189	114	108	177	420	569
English	44	0	104	48	40	76	72	68
General Ed	0	0	0	3	8	4	33	0
History	32	56	20	0	0	0	16	0
Kinesiology	68	0	91	190	54	132	62	50
Nursing	0	0	0	16	0	78	21	114
Philosophy	16	0	44	0	56	0	40	0
Physics	0	0	0	0	0	40	0	0
Political Science	0	0	0	140	0	0	0	0
Psychology	12	60	36	76	20	98	16	88
Religion	68	0	44	24	88	0	116	68
Sociology	24	0	36	40	52	0	36	0
Spanish	0	7	0	4	18	45	0	0

ENROLLMENT – Headcount and Full-Time Equivalent (FTE) Trends



FIRST-YEAR STUDENTS – Historical Profile

	2011	2012	2013	2014	2015
Entering Cohort	324	302	284	315	260
Iowa Students	168	152	136	173	132
<i>% of Total</i>	51.9%	50.3%	47.9%	54.9%	50.8%
All Other States	148	142	142	133	118
<i>% of Total</i>	45.7%	47.0%	50.0%	42.2%	45.4%
International Students	8	8	6	9	10
<i>% of Total</i>	2.5%	2.6%	2.1%	2.9%	3.8%
Reformed Church Affiliation	89	72	59	69	64
<i>% of Total</i>	27.5%	23.8%	20.8%	21.9%	24.6%
All Other Religious Affiliations	235	230	198	215	169
<i>% of Total</i>	72.5%	76.2%	69.7%	68.2%	65.0%
Public School	243	218	216	235	185
<i>% of Total</i>	75.0%	72.2%	76.1%	74.6%	71.2%
Private School	67	58	56	49	50
<i>% of Total</i>	20.7%	19.2%	19.7%	15.6%	19.2%
Home School	8	16	12	13	10
<i>% of Total</i>	2.5%	5.3%	4.2%	4.1%	3.8%
# of Freshman Entering w/ Credit	159	153	139	142	140
<i>% of Freshman Cohort</i>	49.1%	50.7%	48.8%	45.1%	53.8%
Average Freshman Credit Load	15.4	15.3	15.4	15.6	15.8
Students with Parent Alum(s)	51	43	47	48	48
<i>% of Total</i>	15.7%	14.2%	16.5%	15.2%	18.5%
First Generation Students	59	36	38	45	18
<i>% of Total</i>	18.2%	11.9%	13.3%	14.2%	6.9%
Female Students	186	162	149	178	158
<i>% of Total</i>	57.4%	53.6%	52.5%	56.5%	60.8%
Male Students	138	140	135	137	102
<i>% of Total</i>	42.6%	46.4%	47.5%	43.5%	39.2%
Mean HS GPA	3.52	3.53	3.53	3.60	3.65
Conditional Admits	21	19	11	9	7
<i>% of Total</i>	6.5%	6.3%	3.9%	2.9%	2.7%
Mean Composite ACT (St Dev)	24.4 (3.7)	24.3 (4.2)	24.4 (3.8)	24.3 (3.9)	24.8 (4.1)
<i>Female Students</i>	24.7	24.7	24.6	24.5	25.0
<i>Male Students</i>	23.9	23.8	24.1	24.1	24.4
% in Top 10% of HS Class	23.7%	25.7%	19.1%	22.6%	24.5%
% in Top 25% of HS Class	51.9%	54.2%	48.8%	54.7%	56.9%
% in Top 50% of HS Class	81.9%	78.7%	81.3%	86.8%	87.5%
% in Bottom 50% of HS Class	18.1%	21.3%	18.7%	13.2%	12.5%
ACT Composite Quartiles					
25%	22	22	22	21	21
50%	24	24	25	24	24
75%	27	27	27	27	28
High School GPA Quartiles					
25%	3.27	3.24	3.28	3.38	3.35
50%	3.63	3.66	3.66	3.67	3.76
75%	3.88	3.91	3.88	3.93	3.96

FIRST-YEAR STUDENTS – Enrollment by State

	2011	%	2012	%	2013	%	2014	%	2015	%
Iowa	168	53.2%	152	51.7%	136	48.9%	173	56.5%	132	52.8%
Great Lakes States	12	3.8%	16	5.4%	13	4.7%	9	2.9%	8	3.2%
<i>Illinois</i>	5	1.6%	6	2.0%	7	2.5%	4	1.3%	1	0.4%
<i>Indiana</i>	1	0.3%	0	0.0%	0	0.0%	0	0.0%	0	0.0%
<i>Michigan</i>	2	0.6%	5	1.7%	0	0.0%	2	0.7%	3	1.2%
<i>Ohio</i>	0	0.0%	1	0.3%	0	0.0%	0	0.0%	0	0.0%
<i>Wisconsin</i>	4	1.3%	4	1.4%	6	2.2%	3	1.0%	4	1.6%
Midwest States	80	25.3%	73	25.0%	74	26.6%	82	26.8%	80	32.0%
<i>Kansas</i>	0	0.0%	1	0.3%	1	0.4%	0	0.0%	3	1.2%
<i>Minnesota</i>	35	11.1%	26	8.8%	27	9.7%	22	7.2%	25	10.0%
<i>Missouri</i>	2	0.6%	1	0.3%	1	0.4%	2	0.7%	1	0.4%
<i>Nebraska</i>	13	4.1%	22	7.5%	15	5.4%	27	8.8%	26	10.4%
<i>North Dakota</i>	2	0.6%	1	0.3%	0	0.0%	1	0.3%	1	0.4%
<i>South Dakota</i>	28	8.9%	22	7.5%	30	10.8%	30	9.8%	24	9.6%
Northeastern States	2	0.6%	1	0.3%	2	0.7%	1	0.3%	0	0.0%
<i>Connecticut</i>	0	0.0%	0	0.0%	0	0.0%	0	0.0%	0	0.0%
<i>Delaware</i>	0	0.0%	0	0.0%	0	0.0%	0	0.0%	0	0.0%
<i>Massachusetts</i>	0	0.0%	0	0.0%	0	0.0%	0	0.0%	0	0.0%
<i>Maryland</i>	0	0.0%	1	0.3%	0	0.0%	1	0.3%	0	0.0%
<i>Maine</i>	1	0.3%	0	0.0%	0	0.0%	0	0.0%	0	0.0%
<i>New Hampshire</i>	0	0.0%	0	0.0%	0	0.0%	0	0.0%	0	0.0%
<i>New Jersey</i>	0	0.0%	0	0.0%	0	0.0%	0	0.0%	0	0.0%
<i>New York</i>	0	0.0%	0	0.0%	1	0.4%	0	0.0%	0	0.0%
<i>Pennsylvania</i>	1	0.3%	0	0.0%	1	0.4%	0	0.0%	0	0.0%
<i>Rhode Island</i>	0	0.0%	0	0.0%	0	0.0%	0	0.0%	0	0.0%
<i>Vermont</i>	0	0.0%	0	0.0%	0	0.0%	0	0.0%	0	0.0%

FIRST-YEAR STUDENTS – Enrollment by State

	2011	%	2012	%	2013	%	2014	%	2015	%
Western States	47	14.9%	48	16.3%	46	16.5%	33	10.8%	21	8.4%
Alaska	0	0.0%	0	0.0%	0	0.0%	0	0.0%	0	0.0%
Arizona	1	0.3%	3	1.0%	5	1.8%	5	1.6%	1	0.4%
California	30	9.5%	26	8.8%	23	8.2%	11	3.6%	12	4.8%
Colorado	6	1.9%	11	3.7%	13	4.7%	8	2.6%	4	1.6%
Hawaii	0	0.0%	0	0.0%	0	0.0%	0	0.0%	1	0.4%
Idaho	3	0.9%	1	0.3%	0	0.0%	1	0.3%	1	0.4%
Montana	0	0.0%	0	0.0%	1	0.4%	2	0.7%	1	0.4%
New Mexico	0	0.0%	0	0.0%	0	0.0%	0	0.0%	1	0.4%
Nevada	1	0.3%	1	0.3%	0	0.0%	0	0.0%	0	0.0%
Oregon	0	0.0%	1	0.3%	0	0.0%	1	0.3%	0	0.0%
Utah	0	0.0%	0	0.0%	0	0.0%	0	0.0%	0	0.0%
Washington	6	1.9%	5	1.7%	4	1.4%	5	1.6%	0	0.0%
Wyoming	0	0.0%	0	0.0%	0	0.0%	0	0.0%	0	0.0%
Southern States	7	2.2%	4	1.4%	7	2.5%	8	2.6%	9	3.6%
Alabama	1	0.3%	1	0.3%	0	0.0%	0	0.0%	4	1.6%
Arkansas	0	0.0%	0	0.0%	0	0.0%	0	0.0%	1	0.4%
Florida	1	0.3%	2	0.7%	2	0.7%	1	0.3%	0	0.0%
Georgia	1	0.3%	0	0.0%	0	0.0%	0	0.0%	0	0.0%
Kentucky	0	0.0%	0	0.0%	0	0.0%	1	0.3%	0	0.0%
Louisiana	0	0.0%	0	0.0%	0	0.0%	0	0.0%	0	0.0%
Mississippi	0	0.0%	0	0.0%	0	0.0%	0	0.0%	0	0.0%
North Carolina	0	0.0%	0	0.0%	0	0.0%	0	0.0%	0	0.0%
Oklahoma	0	0.0%	0	0.0%	0	0.0%	0	0.0%	1	0.4%
South Carolina	0	0.0%	0	0.0%	0	0.0%	0	0.0%	0	0.0%
Tennessee	0	0.0%	0	0.0%	0	0.0%	0	0.0%	0	0.0%
Texas	1	0.3%	1	0.3%	5	1.8%	4	1.3%	2	0.8%
Virginia	3	0.9%	0	0.0%	0	0.0%	2	0.7%	1	0.4%
West Virginia	0	0.0%	0	0.0%	0	0.0%	0	0.0%	0	0.0%
Totals:	316	100%	294	100%	279	100%	306	100%	250	100%

FIRST-YEAR STUDENTS – Religious Affiliation

	2011	%	2012	%	2013	%	2014	%	2015	%
Reformed	89	27.5%	72	23.8%	59	20.8%	69	21.9%	64	24.6%
Other Reformed	44	13.6%	20	6.6%	22	7.7%	27	8.6%	25	9.6%
<i>Christian Reformed</i>	31	9.6%	11	3.6%	12	4.2%	17	5.4%	19	7.3%
<i>Netherlands Reformed</i>	0	0.0%	0	0.0%	0	0.0%	2	0.6%	0	0.0%
<i>Presbyterian</i>	9	2.8%	8	2.6%	10	3.5%	7	2.2%	3	1.1%
<i>Protestant Reformed</i>	2	0.6%	0	0.0%	0	0.0%	0	0.0%	1	0.4%
<i>United Reformed</i>	2	0.6%	1	0.3%	0	0.0%	1	0.3%	1	0.4%
<i>Other Reformed</i>	0	0.0%	0	0.0%	0	0.0%	0	0.0%	1	0.4%
Other Protestant	146	45.1%	169	56.0%	145	51.1%	163	51.7%	131	50.4%
<i>Assembly of God</i>	5	1.5%	3	1.0%	5	1.8%	7	2.2%	4	1.5%
<i>Baptist</i>	18	5.6%	24	7.9%	19	6.7%	24	7.6%	24	9.2%
<i>Berean</i>	0	0.0%	0	0.0%	0	0.0%	1	0.3%	0	0.0%
<i>Bible Church/Fundamental</i>	0	0.0%	0	0.0%	3	1.1%	5	1.6%	2	0.8%
<i>Brethren</i>	0	0.0%	0	0.0%	1	0.4%	1	0.3%	0	0.0%
<i>Christian Church of Christ</i>	5	1.5%	7	2.3%	3	1.1%	8	2.5%	12	4.6%
<i>Christian Mission Alliance</i>	10	3.1%	8	2.6%	8	2.8%	11	3.5%	4	1.5%
<i>Church of Nazarene</i>	2	0.6%	0	0.0%	0	0.0%	0	0.0%	1	0.4%
<i>Congregational</i>	3	0.9%	1	0.3%	0	0.0%	0	0.0%	0	0.0%
<i>Episcopal</i>	0	0.0%	2	0.7%	1	0.4%	0	0.0%	1	0.4%
<i>Evangelical Covenant</i>	1	0.3%	2	0.7%	2	0.7%	1	0.3%	3	1.1%
<i>Evangelical Free</i>	23	7.1%	32	10.6%	24	8.5%	26	8.3%	25	9.6%
<i>Friends/Quaker</i>	0	0.0%	0	0.0%	0	0.0%	0	0.0%	1	0.4%
<i>Lutheran</i>	26	8.0%	34	11.3%	23	8.1%	26	8.3%	28	10.8%
<i>Mennonite</i>	1	0.3%	1	0.3%	4	1.4%	2	0.6%	0	0.0%
<i>Methodist/Wesleyan</i>	12	3.7%	13	4.3%	20	7.0%	19	6.0%	9	3.5%
<i>Non-denominational</i>	38	11.7%	39	12.9%	32	11.3%	32	10.2%	15	5.8%
<i>Pentecostal</i>	2	0.6%	3	1.0%	0	0.0%	0	0.0%	2	0.8%
Roman Catholic	23	7.1%	17	5.6%	22	7.7%	19	6.0%	8	3.1%
Other	7	2.2%	9	3.0%	8	2.8%	3	1.0%	4	1.5%
Not Indicated	15	4.6%	15	5.0%	28	9.8%	34	10.8%	28	10.8%
Totals:	324	100%	302	100%	284	100%	315	100%	260	100%

FIRST-YEAR STUDENTS – Undergraduate Majors

Departments/Majors	2011	% of Total	2012	% of Total	2013	% of Total	2014	% of Total	2015	% of Total
Art	8	2.1%	18	4.1%	4	1.0%	5	1.3%	4	1.3%
<i>Art</i>	3	0.8%	9	2.0%	1	0.3%	3	0.8%	2	0.7%
<i>Art-Graphic Design</i>	5	1.3%	9	2.0%	3	0.8%	2	0.5%	2	0.7%
Biology	42	11.1%	55	12.4%	34	8.5%	44	11.3%	42	13.9%
<i>Biology</i>	2	0.5%	1	0.2%	4	1.0%	14	3.6%	16	5.3%
<i>Biology Ecological Science</i>	3	0.8%	5	1.1%	4	1.0%	3	0.8%	2	0.7%
<i>Biology Health Professions</i>	37	9.8%	43	9.7%	25	6.3%	25	6.4%	23	7.6%
<i>Biology Teaching</i>	0	0.0%	2	0.5%	1	0.3%	0	0.0%	0	0.0%
<i>Genetics, Molecular, Cell Bio</i>									1	0.3%
<i>Medical Laboratory Science</i>			4	0.9%	0	0.0%	2	0.5%	0	0.0%
Business	68	18.0%	54	12.2%	46	11.5%	58	14.9%	51	16.9%
<i>Accounting</i>	17	4.5%	9	2.0%	7	1.8%	14	3.6%	10	3.3%
<i>Bus Admin-Ag Business</i>	1	0.3%	1	0.2%	0	0.0%	7	1.8%	3	1.0%
<i>Bus Admin-Finance</i>	1	0.3%	0	0.0%	2	0.5%	5	1.3%	7	2.3%
<i>Bus Admin-General</i>	39	10.3%	41	9.3%	18	4.5%	20	5.2%	17	5.6%
<i>Bus Admin-Human Res</i>	0	0.0%	0	0.0%	1	0.3%	1	0.3%	0	0.0%
<i>Bus Admin-Management</i>	1	0.3%	1	0.2%	11	2.8%	8	2.1%	5	1.7%
<i>Bus Admin-Marketing</i>	1	0.3%	0	0.0%	0	0.0%	0	0.0%	5	1.7%
<i>Business Education</i>	6	1.6%	1	0.2%	5	1.3%	2	0.5%	2	0.7%
<i>Economics</i>	2	0.5%	1	0.2%	2	0.5%	1	0.3%	2	0.7%
Chemistry	5	1.3%	14	3.2%	6	1.5%	3	0.8%	7	2.3%
Communications	3	0.8%	10	2.3%	8	2.0%	8	2.1%	6	2.0%
<i>Journalism</i>	2	0.5%	3	0.7%	2	0.5%	2	0.5%	1	0.3%
<i>Public Relations</i>	1	0.3%	7	1.6%	6	1.5%	6	1.5%	5	1.7%
Computer Science	8	2.1%	5	1.1%	9	2.3%	7	1.8%	6	2.0%
<i>Computer Science</i>	5	1.3%	4	0.9%	5	1.3%	6	1.5%	6	2.0%
<i>Computer Information Syst</i>	3	0.8%	1	0.2%	4	1.0%	1	0.3%	0	0.0%
Elementary Education	36	9.5%	28	6.3%	32	8.0%	41	10.6%	34	11.3%
English	14	3.7%	15	3.4%	17	4.3%	12	3.1%	5	1.7%
<i>English Teaching</i>	8	2.1%	6	1.4%	5	1.3%	7	1.8%	2	0.7%
<i>Literature</i>	1	0.3%	5	1.1%	2	0.5%	1	0.3%	2	0.7%
<i>Writing and Rhetoric</i>	5	1.3%	4	0.9%	10	2.5%	4	1.0%	1	0.3%
History	9	2.4%	15	3.4%	6	1.5%	11	2.8%	5	1.7%
Humanities	2	0.5%	3	0.7%	1	0.3%	0	0.0%	0	0.0%

FIRST-YEAR STUDENTS – Undergraduate Majors

Departments/Majors	2011	% of Total	2012	% of Total	2013	% of Total	2014	% of Total	2015	% of Total
Kinesiology	27	7.2%	47	10.6%	41	10.3%	40	10.3%	24	7.9%
<i>Athletic Training*</i>	0	0.0%	1	0.2%	0	0.0%	1	0.3%	0	0.0%
<i>Exercise Science</i>	12	3.2%	16	3.6%	21	5.3%	18	4.6%	11	3.6%
<i>Physical Education</i>	7	1.9%	5	1.1%	7	1.8%	7	1.8%	7	2.3%
<i>Sport Mgmt-Business</i>	2	0.5%	12	2.7%	3	0.8%	4	1.0%	2	0.7%
<i>Sport Mgmt-Coach/AthlAdm</i>	6	1.6%	13	2.9%	9	2.3%	9	2.3%	4	1.3%
<i>Sport Mgmt-Inform/Media</i>	0	0.0%	0	0.0%	1	0.3%	1	0.3%	0	0.0%
Math	16	4.2%	21	4.8%	15	3.8%	14	3.6%	15	5.0%
<i>Actuarial Science</i>	6	1.6%	4	0.9%	7	1.8%	3	0.8%	9	3.0%
<i>Mathematics</i>	10	2.7%	17	3.8%	8	2.0%	11	2.8%	6	2.0%
Modern Foreign Language	11	2.9%	21	4.8%	14	3.5%	11	2.8%	5	1.7%
<i>Spanish</i>	9	2.4%	15	3.4%	12	3.0%	8	2.1%	5	1.7%
<i>Translation/Interpretation</i>	2	0.5%	6	1.4%	2	0.5%	3	0.8%	0	0.0%
Music	8	2.1%	12	2.7%	18	4.5%	10	2.6%	2	0.7%
<i>Modified Music</i>	2	0.5%	2	0.5%	5	1.3%	2	0.5%	0	0.0%
<i>Music</i>	4	1.1%	6	1.4%	10	2.5%	7	1.8%	0	0.0%
<i>Music Ministry</i>	2	0.5%	4	0.9%	3	0.8%	1	0.3%	2	0.7%
Nursing*	0	0.0%	1	0.2%	0	0.0%	0	0.0%	0	0.0%
Philosophy	0	0.0%	1	0.2%	0	0.0%	1	0.3%	0	0.0%
Political Science	1	0.3%	4	0.9%	4	1.0%	2	0.5%	4	1.3%
Psychology	16	4.2%	25	5.7%	21	5.3%	19	4.9%	13	4.3%
Religion	19	5.0%	24	5.4%	8	2.0%	15	3.9%	6	2.0%
<i>Christian Ed & Youth Ministry</i>	12	3.2%	15	3.4%	6	1.5%	10	2.6%	4	1.3%
<i>CE Youth/Adolescents Opt.</i>	0	0.0%	2	0.5%	0	0.0%	1	0.3%	1	0.3%
<i>Religion</i>	7	1.9%	7	1.6%	2	0.5%	4	1.0%	1	0.3%
Social Work	15	4.0%	10	2.3%	6	1.5%	12	3.1%	9	3.0%
Sociology	8	2.1%	8	1.8%	6	1.5%	15	3.9%	7	2.3%
<i>Criminal Justice</i>							12	3.1%	7	2.3%
<i>Sociology</i>							3	0.8%	0	0.0%
Theatre	3	0.8%	7	1.6%	5	1.3%	6	1.5%	7	2.3%
<i>Theatre</i>	1	0.3%	5	1.1%	5	1.3%	5	1.3%	6	2.0%
<i>Theatre & Speech</i>	2	0.5%	2	0.5%	0	0.0%	1	0.3%	1	0.3%
Undeclared	58	15.4%	47	10.6%	58	14.5%	54	13.9%	50	16.6%
Totals:	377		442		400		388		302	

- * New students are unable to officially declare Nursing or Athletic Training as majors until the end of their first year, at which time they are admitted to the program. Until then, they are counted as Undeclared
- Figures include double majors

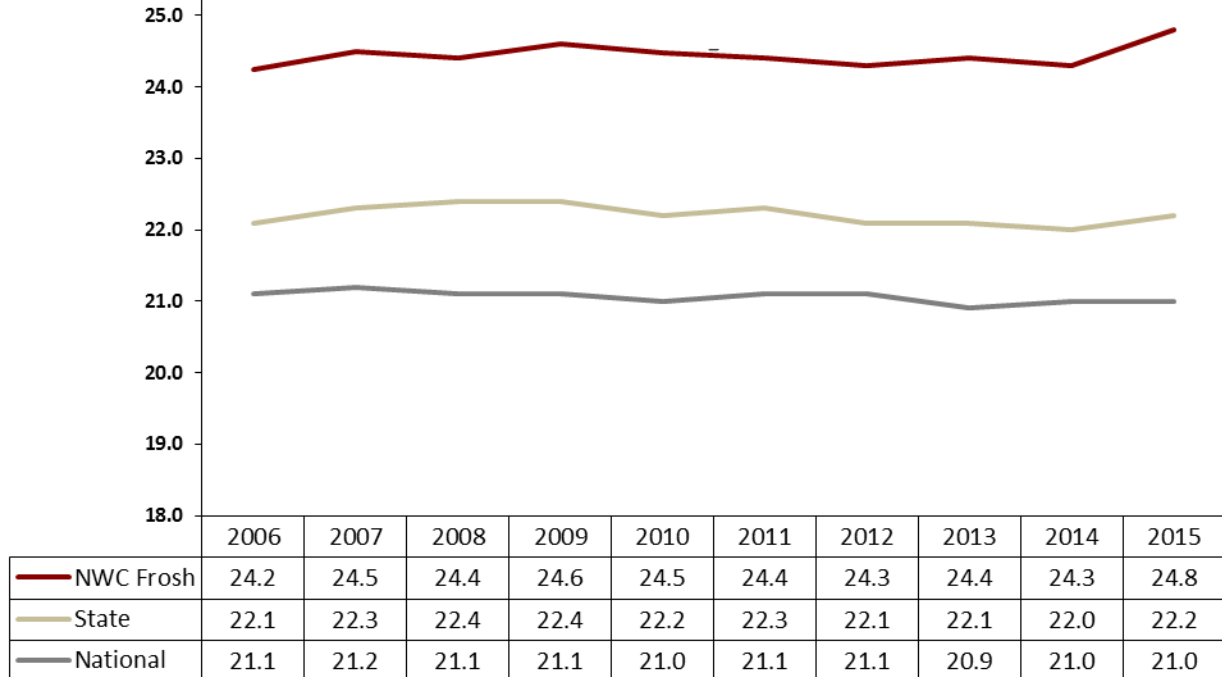
FIRST-YEAR STUDENTS – Undergraduate Admissions Yields

	2011			2012			2013			2014			2015		
	<i>Enr</i>	<i>Adm</i>	<i>%</i>	<i>Enr</i>	<i>Adm</i>	<i>%</i>	<i>Enr</i>	<i>Adm</i>	<i>%</i>	<i>Enr</i>	<i>Adm</i>	<i>%</i>	<i>Enr</i>	<i>Adm</i>	<i>%</i>
Freshman Cohort	324	1060	30.6	302	878	34.4	284	929	30.6	315	976	32.3	260	890	29.2
Male	138	490	28.2	140	387	36.2	135	451	29.9	137	471	29.1	102	394	25.9
Female	186	570	32.6	162	491	33.0	149	478	31.2	178	505	35.2	158	496	31.9

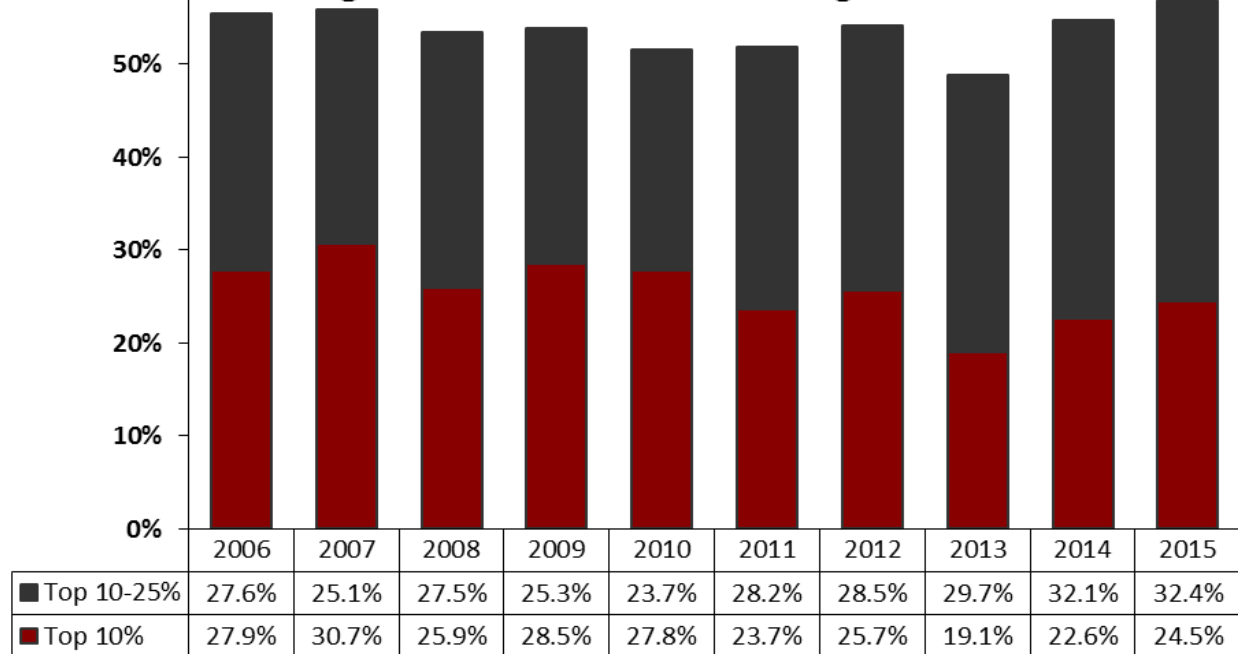
	2011			2012			2013			2014			2015		
	<i>Adm</i>	<i>App</i>	<i>%</i>	<i>Adm</i>	<i>App</i>	<i>%</i>	<i>Adm</i>	<i>Aoo</i>	<i>%</i>	<i>Adm</i>	<i>App</i>	<i>%</i>	<i>Adm</i>	<i>App</i>	<i>%</i>
Freshman Cohort	1060	1422	74.5	878	1193	73.6	929	1221	76.1	976	1254	77.8	890	1234	72.1
Male	490	703	69.7	387	552	70.1	451	610	73.9	471	625	75.4	394	548	71.9
Female	570	719	79.3	491	641	76.6	478	611	78.2	505	629	80.3	496	686	72.3

FIRST-YEAR STUDENTS – ACT Composite Scores & HS Class Rank

Average ACT Composite Score



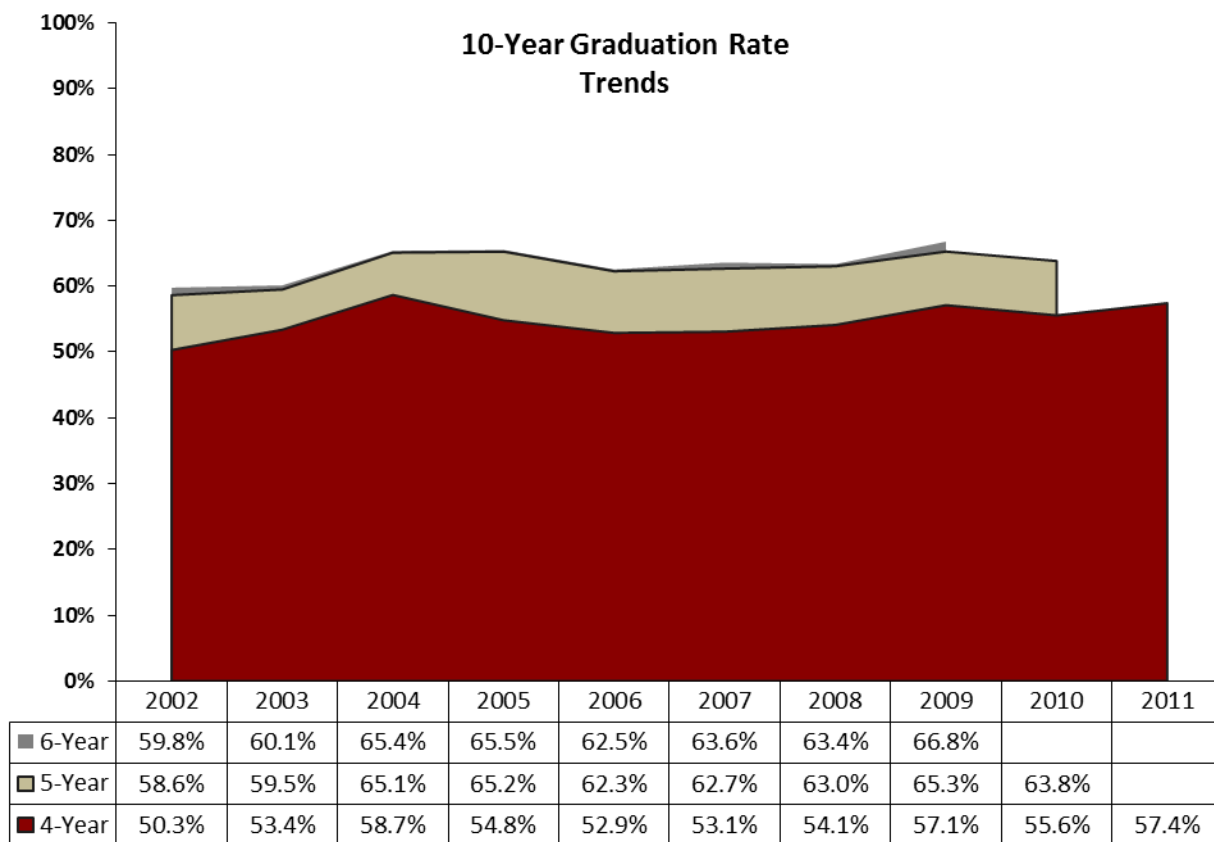
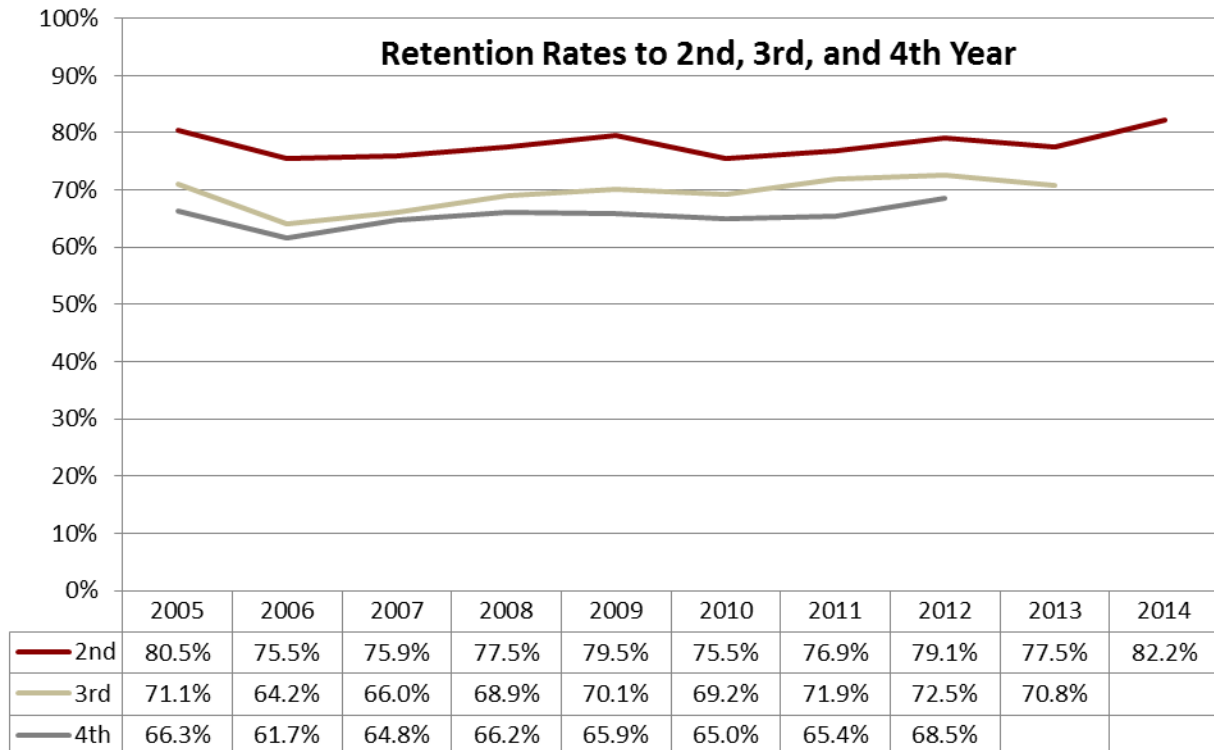
Incoming Cohort Ranks within their High School Class



FIRST-YEAR STUDENTS – Advanced Placement

	2011	2012	2013	2014	2015
# Students Submitting AP Scores	50	68	57	50	49
# Students Earning College Credit	26	31	20	19	26
% Students Earning College Credit	52%	46%	35%	38%	53%
AP Tests Awarded College Credit	33	66	39	32	58
<i>Biology</i>	1	3	1	2	4
<i>Calculus AB</i>	5	10	4	6	9
<i>Calculus BC</i>	0	1	0	0	2
<i>Chemistry</i>	0	3	1	0	0
<i>Economics-Macro</i>	0	1	2	1	0
<i>Economics-Micro</i>	0	0	1	1	0
<i>English Language/Composition</i>	4	9	1	3	9
<i>English Literature/Composition</i>	5	7	6	5	9
<i>Environmental Science</i>	2	0	2	0	1
<i>European History</i>	0	0	1	0	1
<i>Government & Politics (U.S.)</i>	4	4	1	1	5
<i>Human Geography</i>	0	5	0	2	1
<i>Music Theory</i>	0	0	0	0	0
<i>Physics B</i>	0	1	1	0	0
<i>Physics C - Mechanics</i>	0	0	0	0	1
<i>Psychology</i>	2	7	6	4	8
<i>Spanish Language and Culture</i>	4	1	2	2	2
<i>Statistics</i>	1	3	1	2	1
<i>US History</i>	5	11	8	3	4
<i>World History</i>	0	0	1	0	1

RETENTION AND GRADUATION – Trends by Cohort Year



RETENTION AND GRADUATION – Retention Rates

	2009	2010	2011	2012	2013	2014
Initial Freshman Cohort Enrolled	331	351	324	302	284	315
Male	146	152	138	140	135	137
Female	185	199	186	162	149	178
% Returning Second Fall	79.5%	75.5%	76.9%	79.1%	77.5%	82.2%
Male	76.7%	75.0%	73.2%	73.6%	71.1%	81.0%
Female	81.6%	75.9%	79.6%	84.0%	83.2%	83.1%
% Returning Third Fall	70.1%	69.2%	71.9%	72.5%	70.8%	--
Male	67.1%	71.1%	68.1%	65.7%	60.7%	--
Female	72.4%	67.8%	74.7%	78.4%	79.9%	--
% Returning Fourth Fall	65.9%	65.0%	65.4%	68.5%	--	--
Male	63.7%	65.1%	63.0%	61.4%	--	--
Female	67.6%	64.8%	67.2%	74.7%	--	--

	2009	2010	2011	2012	2013	2014
Student Athletes Enrolled	149	157	159	173	161	179
Male	102	99	92	102	104	107
Female	47	58	67	71	57	72
% Returning Second Fall	77.9%	71.3%	71.7%	75.7%	76.4%	80.4%
Male	72.5%	71.7%	66.3%	69.6%	71.2%	79.4%
Female	89.4%	70.7%	79.1%	84.5%	86.0%	81.9%
% Returning Third Fall	69.8%	69.4%	66.0%	68.7%	68.3%	--
Male	65.7%	69.7%	59.8%	61.8%	59.6%	--
Female	78.7%	69.0%	74.6%	78.9%	84.2%	--
% Returning Fourth Fall	65.8%	66.9%	62.3%	63.0%	--	--
Male	63.7%	66.7%	59.8%	54.9%	--	--
Female	70.2%	67.2%	65.7%	74.6%	--	--

	2009	2010	2011	2012	2013	2014
Non-Athletes Enrolled	182	194	165	129	123	136
Male	44	53	46	38	31	30
Female	138	141	119	91	92	106
% Returning Second Fall	79.1%	78.9%	81.2%	83.7%	78.9%	84.6%
Male	81.8%	81.1%	87.0%	84.2%	71.0%	86.7%
Female	78.3%	78.0%	79.0%	83.5%	81.5%	84.0%
% Returning Third Fall	70.3%	69.1%	77.6%	77.5%	74.0%	--
Male	74.5%	73.6%	82.6%	76.3%	64.5%	--
Female	70.3%	67.4%	75.6%	78.0%	77.2%	--
% Returning Fourth Fall	65.9%	62.9%	68.5%	76.0%	--	--
Male	63.6%	62.3%	69.6%	78.9%	--	--
Female	66.7%	63.1%	68.1%	74.7%	--	--

RETENTION AND GRADUATION – Retention Rates

	2009	2010	2011	2012	2013	2014
In State	174	166	168	152	136	173
Male	77	68	76	70	62	73
Female	97	98	92	82	74	100
% Returning Second Fall	77.6%	79.5%	72.0%	79.6%	84.6%	86.7%
Male	80.5%	83.8%	71.1%	70.0%	80.6%	84.9%
Female	75.3%	76.5%	72.8%	87.8%	87.8%	88.0%
% Returning Third Fall	69.5%	72.3%	67.9%	73.0%	76.5%	--
Male	70.1%	79.4%	67.1%	64.2%	67.7%	--
Female	69.1%	67.3%	68.5%	80.5%	83.4%	--
% Returning Fourth Fall	66.1%	66.9%	61.3%	69.1%	--	--
Male	66.2%	73.5%	61.8%	61.4%	--	--
Female	66.0%	62.2%	60.9%	75.6%	--	--

	2009	2010	2011	2012	2013	2014
Out of State (U.S. Residents)	151	179	148	142	142	133
Male	65	80	61	64	68	60
Female	86	99	87	78	74	73
% Returning Second Fall	81.5%	72.1%	81.1%	78.2%	69.7%	75.9%
Male	70.8%	67.5%	75.4%	76.6%	60.3%	76.7%
Female	89.5%	75.8%	85.1%	79.5%	78.4%	75.3%
% Returning Third Fall	71.5%	66.5%	75.7%	71.8%	64.1%	--
Male	63.1%	63.8%	68.9%	65.6%	51.5%	--
Female	77.9%	68.7%	80.5%	76.9%	75.7%	--
% Returning Fourth Fall	66.9%	63.1%	68.9%	69.0%	--	--
Male	61.5%	57.5%	63.9%	62.5%	--	--
Female	70.9%	67.7%	72.4%	74.4%	--	--

	2009	2010	2011	2012	2013	2014
Conditional	19	16	21	19	11	9
Male	14	13	17	13	8	5
Female	5	3	4	6	3	4
% Returning Second Fall	52.6%	18.8%	52.4%	52.6%	36.4%	77.8%
Male	57.1%	15.4%	52.9%	53.8%	25.0%	60.0%
Female	40.0%	33.3%	50.0%	50.0%	66.7%	100.0%
% Returning Third Fall	47.4%	12.5%	47.6%	42.1%	27.2%	--
Male	57.1%	15.4%	47.1%	38.5%	12.5%	--
Female	20.0%	0.0%	50.0%	50.0%	66.7%	--
% Returning Fourth Fall	42.1%	12.5%	47.6%	52.6%	--	--
Male	50.0%	15.4%	47.1%	53.8%	--	--
Female	20.0%	0.0%	50.0%	50.0%	--	--

RETENTION AND GRADUATION – Graduation Rates

	2007	2008	2009	2010	2011
Initial Cohort Enrolled	324	292	331	351	324
% Graduating within 4 Years	53.1%	54.1%	57.1%	55.6%	57.4%
<i>Male</i>	45.9%	48.2%	49.3%	51.3%	47.8%
<i>Female</i>	58.1%	57.8%	63.2%	58.8%	64.5%
% Graduating within 5 Years	62.7%	63.0%	65.3%	63.8%	--
<i>Male</i>	56.4%	56.3%	59.6%	63.2%	--
<i>Female</i>	67.0%	67.2%	69.7%	64.3%	--
% Graduating w/in 6 Years	63.6%	63.4%	66.8%	--	--
<i>Male</i>	58.6%	56.3%	61.6%	--	--
<i>Female</i>	67.0%	67.8%	70.8%	--	--

	2007	2008	2009	2010	2011
Non-Athlete Cohort Enrolled	191	177	162	193	164
% Graduating within 4 Years	53.9%	58.8%	58.0%	55.4%	63.4%
<i>Male</i>	51.8%	59.0%	52.4%	51.8%	57.8%
<i>Female</i>	54.8%	58.7%	60.0%	56.9%	65.5%
% Graduating within 5 Years	65.4%	66.7%	66.0%	62.2%	--
<i>Male</i>	67.9%	66.7%	64.3%	62.5%	--
<i>Female</i>	64.4%	66.7%	66.7%	62.0%	--
% Graduating within 6 Years	67.0%	67.2%	66.0%	--	--
<i>Male</i>	73.2%	66.7%	64.3%	--	--
<i>Female</i>	64.4%	67.4%	66.7%	--	--

	2007	2008	2009	2010	2011
Student Athlete Cohort Enrolled	133	115	169	158	160
% Graduating within 4 Years	51.9%	47.0%	56.2%	55.7%	51.3%
<i>Male</i>	41.6%	42.5%	48.1%	51.0%	43.0%
<i>Female</i>	66.1%	54.8%	69.2%	62.9%	62.7%
% Graduating within 5 Years	58.6%	58.3%	64.5%	65.8%	--
<i>Male</i>	48.1%	52.1%	57.7%	63.5%	--
<i>Female</i>	73.2%	69.0%	75.4%	69.4%	--
% Graduating within 6 Years	58.6%	58.3%	67.5%	--	--
<i>Male</i>	48.1%	52.1%	60.6%	--	--
<i>Female</i>	73.2%	69.0%	78.5%	--	--

RETENTION AND GRADUATION – Years to Completion

	2008	2009	2010	2011	2012
Initial Cohort Enrolled Students graduating in:	292	331	351	324	302
3.0 Years or less	0	4	6	10	6
3.5 Years	15	21	25	16	--
% of Graduates, Less than 4 Years	8.1%	11.3%	13.8%	14.0%	100%
4.0	143	164	164	160	--
% of Graduates, 4 Years or less	84.9%	85.5%	87.1%	100%	--
4.5	12	7	13	--	--
5.0	15	20	16	--	--
% of Graduates, 5 Years or less	99.5%	97.7%	100%	--	--
5.5	1	0	--	--	--
6.0	0	5	--	--	--
Total # of Graduates in Cohort	186	221	224	186	6
% of Cohort Graduated	63.5%	66.8%	63.8%	57.4%	2.0%

RETENTION AND GRADUATION – Graduates by Major

	2011	2012	2013	2014	2015
Total Degrees Conferred:	241	231	249	268	245
<i>Accounting</i>	13	12	11	8	13
<i>Actuarial Science</i>	0	2	2	1	4
<i>Art</i>	4	1	4	4	2
<i>Art-Graphic Design</i>	3	6	2	2	5
<i>Athletic Training</i>	6	6	3	6	6
<i>Biology</i>					2
<i>Biology General</i>	3	5	0	2	2
<i>Biology Ecological Science</i>	2	1	2	0	0
<i>Biology Health Professions</i>	19	12	20	18	17
<i>Biology Teaching Major</i>	1	3	2	1	0
<i>Business Admin/Ag Business</i>	2	3	5	5	1
<i>Business Admin/Finance</i>	8	8	17	11	5
<i>Business Admin/General</i>	5	7	1	7	4
<i>Business Admin/HR</i>	4	2	5	3	1
<i>Business Admin/Management</i>	8	5	4	9	3
<i>Business Admin/Marketing</i>	4	7	7	7	7
<i>Business Education</i>	1	1	4	2	3
<i>Chemistry</i>	2	5	1	0	2
<i>Christian Ed & Min/CE &Form</i>	1	0	0	0	0
<i>Christian Ed & Min/Yth & Adol</i>	3	0	0	0	0
<i>Christian Education/Yth Min</i>	4	7	10	7	8
<i>Cinema/Digital Video</i>	3	1	0	0	0
<i>Communication Studies</i>	0	1	0	0	0
<i>Computer Info Systems</i>	2	3	2	4	3
<i>Computer Science</i>	4	5	4	3	3
<i>Economics</i>	0	2	3	2	3
<i>Elementary Education</i>	29	26	33	40	30
<i>English Teaching Major</i>	2	2	5	0	1
<i>Exercise Science</i>	4	5	7	9	16
<i>History</i>	9	5	7	4	7
<i>Humanities</i>	2	0	2	0	1
<i>Journalism</i>	0	2	1	1	0

RETENTION AND GRADUATION – Graduates by Major

	2011	2012	2013	2014	2015
<i>Literature</i>	5	3	2	4	1
<i>Mathematics</i>	3	7	8	6	5
<i>Medical Laboratory Science</i>					1
<i>Modified Music Major</i>	1	1	3	0	0
<i>Music</i>	1	6	6	5	3
<i>Music Ministry</i>	3	1	0	5	0
<i>Nursing</i>	21	19	21	25	27
<i>Paraprofessional Elem</i>	1	2	0	1	0
<i>Philosophy</i>	3	1	1	1	0
<i>Physical Education</i>	5	3	7	3	6
<i>Political Science</i>	3	7	5	5	2
<i>Psychology</i>	7	18	18	15	14
<i>Public Relations</i>	5	8	10	11	11
<i>Religion</i>	9	4	5	8	6
<i>Social Work</i>	10	12	5	10	12
<i>Sociology</i>	6	7	9	12	7
<i>Spanish</i>	10	9	13	16	4
<i>Spanish Translation/Interpretation</i>				4	1
<i>Sports Management – Coaching/Administration</i>		0	5	5	3
<i>Sports Management – Information/Media</i>		1	0	0	0
<i>Sports Management – Business</i>		0	3	1	3
<i>Student Initiated Major</i>	1	2	0	0	1
<i>Theatre</i>	9	4	6	9	5
<i>Theatre and Speech</i>	1	0	0	0	0
<i>Writing and Rhetoric</i>	10	1	7	4	3
Grand Total of Majors:	262	261	298	306	264

Note: Figures reflect double majors

RETENTION AND GRADUATION – Graduates by Minor

	2011	2012	2013	2014	2015
<i>Accounting</i>	3	1	1	2	0
<i>Art</i>	1	1	2	3	1
<i>Arts Administration</i>			1	1	1
<i>Biology</i>	0	0	1	0	0
<i>Business Administration</i>	5	8	10	12	8
<i>Chemistry</i>	2	1	5	6	5
<i>Christian Community Development</i>					2
<i>Christian Mission</i>	4	3	5	6	4
<i>Computer Science</i>	0	0	0	1	0
<i>Corporate Communications</i>	1	0	0	0	0
<i>Cultural Studies</i>	2	3	4	4	5
<i>Developmental Psychology</i>	3	2	1	0	1
<i>Economics</i>	1	2	1	0	0
<i>English Teaching</i>	1	0	0	0	0
<i>French</i>	1	0	0	0	0
<i>Health</i>	3	2	4	1	2
<i>History</i>	0	0	1	1	0
<i>Journalism</i>	1	0	1	0	1
<i>Literature</i>	0	0	0	2	0
<i>Mathematics</i>	3	1	3	0	4
<i>Mathematics Teaching</i>	0	0	0	1	0
<i>Middle East Studies</i>		1	1	2	0
<i>Multi Media</i>	5	1	1	0	0
<i>Music</i>	1	3	0	3	1
<i>Philosophy</i>	1	2	1	0	1
<i>Physics</i>	0	0	1	0	1
<i>Physics Teaching Minor</i>					1
<i>Political Science</i>	1	0	4	0	1
<i>Psychology</i>	11	11	7	7	8
<i>Public Relations</i>		3	0	5	3
<i>Religion</i>	4	4	8	6	3
<i>Sociology</i>	1	7	2	1	4
<i>Spanish</i>	6	2	2	3	2
<i>Teaching English as a Second Language</i>	0	1	2	2	3
<i>Theatre</i>	1	2	0	1	0
<i>Theatre and Speech</i>	1	0	1	1	0
<i>Writing and Rhetoric</i>	2	3	1	1	1
Totals:	65	64	71	72	63

RETENTION AND GRADUATION – Certifications, Endorsements, and Career Concentrations

	2011	2012	2013	2014	2015
Certifications					
<i>Elementary Certification (K-6)</i>	28	22	30	38	27
<i>Secondary Certification (7-12)</i>	11	15	16	6	12
<i>Vertical Certification (K-12)</i>	5	6	11	6	5
Totals:	44	43	57	50	44
Additional Endorsements					
<i>American Government Alt. Endorsement</i>	0	1	0	0	1
<i>American History Alt. Endorsement</i>	0	0	0	1	0
<i>Chemistry Alt. Endorsement</i>	0	0	0	1	0
<i>Coaching Authorization</i>	35	22	36	29	26
<i>Early Childhood Education</i>	7	3	6	6	6
<i>Early Childhood Integrated Setting</i>	0	0	0	1	1
<i>General Science Teaching</i>	0	1	1	0	0
<i>K-6 Endorsement in Art</i>	0	0	0	2	0
<i>K-6 Endorsement in English</i>	0	0	0	1	0
<i>K-6 Endorsement in Math</i>	0	0	1	0	0
<i>K-6 Endorsement in Music</i>	1	0	0	0	0
<i>K-12 Endorsement in Art</i>	1	1	1	0	1
<i>K-12 Endorsement in Music</i>	0	1	0	1	0
<i>K-12 Endorsement in Physical Education</i>	1	1	2	2	1
<i>K-12 Endorsement in Spanish</i>	2	1	3	1	2
<i>Instructional Strategist: Elementary</i>	0	2	9	7	4
<i>Instructional Strategist: Elem/Secondary</i>	0	5	2	1	0
<i>Instructional Strategist: Secondary</i>	0	0	0	0	1
<i>Instructional Strategist: Mild/Moderate K-6</i>	4	5	0	0	0
<i>Middle School Endorsement</i>	1	1	3	4	3
<i>Reading Endorsement</i>	23	17	29	27	18
<i>Sociology Alternative Endorsement</i>	0	0	0	0	1
<i>Teaching English as a Second Language</i>	0	4	6	3	1
<i>Unified Early Childhood</i>	2	0	5	4	6
<i>World History Alt. Endorsement</i>	0	0	0	1	0
Totals:	77	65	104	92	72
Career Concentrations					
<i>Christian Theatre Ministries</i>	0	0	0	0	0
<i>Computer Science</i>	0	0	0	0	0
<i>Criminal Justice</i>	3	1	2	3	2
<i>Fitness Management</i>	4	4	0	3	1
<i>Mission Service</i>	1	0	0	0	0
<i>Neuroscience & persons: standard</i>	0	1	0	1	0
<i>Neuroscience & persons: neuroscience</i>	1	0	1	0	0
<i>Recreation</i>	1	0	0	0	0
<i>Sports Management</i>	0	1	1	1	1
<i>Strength and Conditioning</i>				1	5
Totals:	10	7	5	9	9

RETENTION AND GRADUATION – Career Development Center Survey

Graduating Class	Number of Alums Contacted	% of Surveys Returned	% Accepted Employment Positions	% Attending Grad School	% Employed, in Grad School, or in Military	% Still Actively Seeking Employment
1998	227	62%	75%	12%	88%	10%
1999	236	82%	76%	9%	85%	5%
2000	240	54%	73%	20%	93%	7%
2001	230	49%	73%	19%	92%	8%
2002	267	68%	66%	23%	90%	10%
2003	256	76%	74%	19%	94%	6%
2004	259	93%	75%	20%	96%	4%
2005	289	89%	68%	24%	93%	7%
2006	235	82%	70%	22%	92%	9%
2007	239	90%	81%	13%	93%	7%
2008	274	90%	76%	19%	94%	7%
2009	283	87%	81%	15%	97%	6%
2010	266	88%	76%	10%	86%	14%
2011	243	95%	77%	17%	94%	6%
2012	228	94%	75%	14%	90%	12%
2013	247	92%	81%	14%	96%	4%
2014	271	96%	75%	15%	93%	5%

Note: Figures reflect survey responses within 8 months of graduation for each respective year.

RETENTION AND GRADUATION – Post-grad Educational Destinations

Class of 2013	Class of 2014	Class of 2015
Aurora University (IL)	Ashford University (CA)	A.T. Still University of Health Sciences (MO)
Ball State University (IN)	Bemidji State University (MN)	Belmont University (TN)
Biola University (CA)	Colorado State University	Buena Vista University (IA)
Des Moines University (IA)	Creighton University (NE)	Briar Cliff University (IA)
Emporia State University (KS)	Des Moines University (IA)	Creighton University (NE)
Indiana University	Drake University (IA)	Des Moines University (IA)
Mayo Medical School (MN)	Emporia State University (KS)	Geneva College (PA)
Northern Illinois University	George Washington University (DC)	Liberty University (VA)
Northwestern Health Sciences U. (MN)	Hastings College (NE)	Maryville University (MO)
Roberts Wesleyan (NY)	Morningside College (IA)	Morningside College (IA)
Roger Williams University (RI)	North Dakota State University	Northern Arizona University
South Dakota State University	Roberts Wesleyan College (NY)	Rasmussen College (MN)
Southwest State (MN)	South Dakota State University	Regent University (VA)
University of Colorado	Southern New Hampshire University	Regis University (CO)
University of Denver (CO)	University of Idaho	Roberts Wesleyan College (NY)
University of Iowa	University of North Dakota	South Dakota State University
University of Kansas	University of Nebraska - Lincoln	University of Colorado
U. of Minnesota Graduate School	University of Oklahoma	University of Iowa
U. of Minnesota Pharmacy School	University of Phoenix (AZ)	University of Michigan
University of Sioux Falls (SD)	University of South Dakota	University of Nebraska - Lincoln
University of South Dakota	Wayne State College (NE)	University of Nebraska - Omaha
W.R. Harper College (IL)	Western Theological Seminary (MI)	University of Northern Iowa
Western Kentucky University	Wheaton College (IL)	University of Sioux Falls (SD)
Western Theological Seminary (MI)		University of South Dakota
		University of St. Augustine for Health Sciences (FL)
		Western Theological Seminary (MI)

Note: The above lists represent a sampling of graduate institutions where Northwestern College graduates are known to be enrolled in the fall semester immediately following their commencement. Data from the National Student Clearinghouse.

CO-CURRICULAR PARTICIPATION – Off-Campus and Study Abroad

Off Campus/Study Abroad Programs	10-11	11-12	12-13	13-14	14-15
Northwestern Summer Study Abroad					
<i>Austria</i>		8			
<i>Czech Republic</i>	8		7		7
<i>Ecuador</i>		10		9	
<i>Germany</i>	8				
<i>Great Britain</i>		9		8	
<i>Greece</i>				10	
<i>India</i>					
<i>Israel</i>	13		14		7
<i>Japan</i>	11				
<i>Tanzania</i>				9	
<i>Turkey</i>	12				
Semester Programs					
<i>Chicago Metropolitan Program</i>	11	12	10	12	10
<i>Denver Urban Semester</i>			3	8	5
<i>Oman</i>	6	8	6	7	4
<i>Romania/Transylvania</i>	5	8	7	9	4
Central College Programs					
<i>London/Colchester, England</i>	1	3	2	2	2
<i>Spain</i>		1			
<i>Wales</i>				1	
CCCU Programs					
<i>American Studies Program (Washington, D.C.)</i>	1	1			
<i>Australia Studies Centre</i>			1		
<i>Contemporary Music Program (Martha's Vineyard)</i>	1		1	1	1
<i>Latin American Studies Program (Costa Rica)</i>	5	6	9	3	
<i>Los Angeles Film Studies Center</i>	2				
<i>Middle East Studies Program (Egypt)</i>	1				
<i>Scholar's Semester in Oxford</i>		1			
<i>Uganda Studies Program</i>					1
Other Study Abroad Programs					
<i>Augsburg College, Cuernavaca, Mexico</i>		1			
<i>Bethel University, Guatemala</i>			2	1	
<i>Casa de Soldariad, El Salvador</i>					1
<i>Creation Care Studies Program, Belize/South Pacific</i>	3	1		1	4
<i>Dordt College, Netherlands</i>					1
<i>Florence, Italy</i>	3			1	
<i>Hiedelberg, Germany</i>	1				3
<i>International Study Abroad Program</i>		2			1
<i>Lithuania Christian College</i>			1		
<i>Trinity Christian College, Spain</i>	4	4	7	7	8
Totals:	96	75	70	89	59

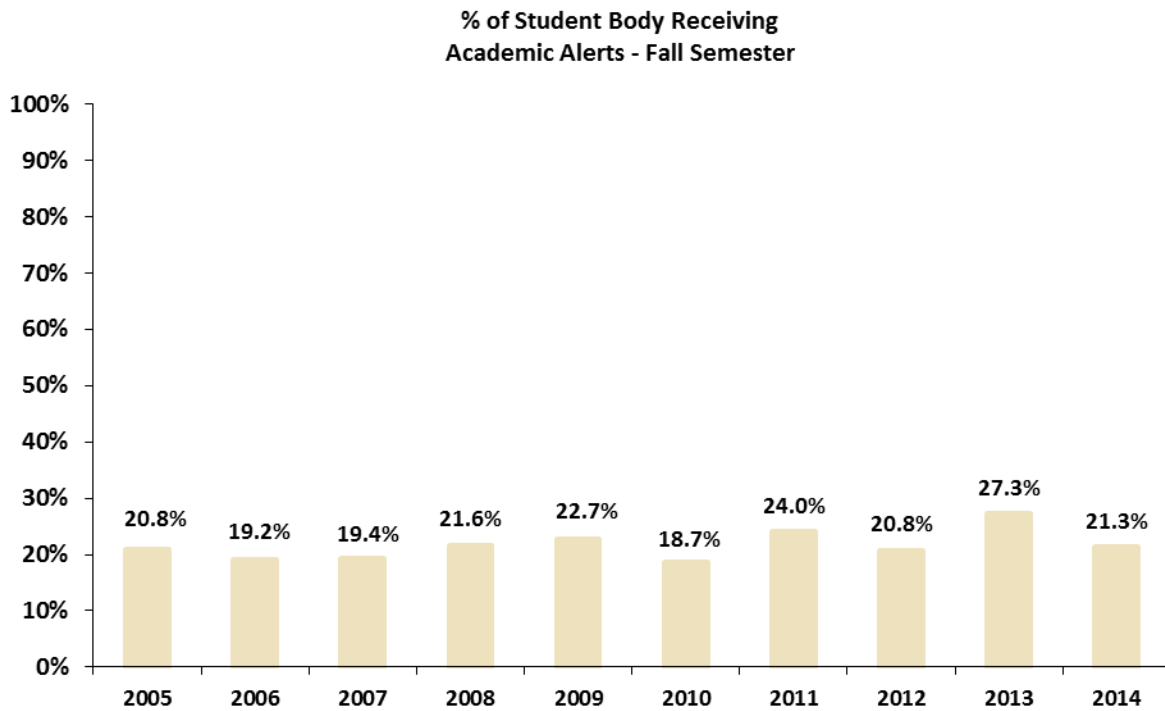
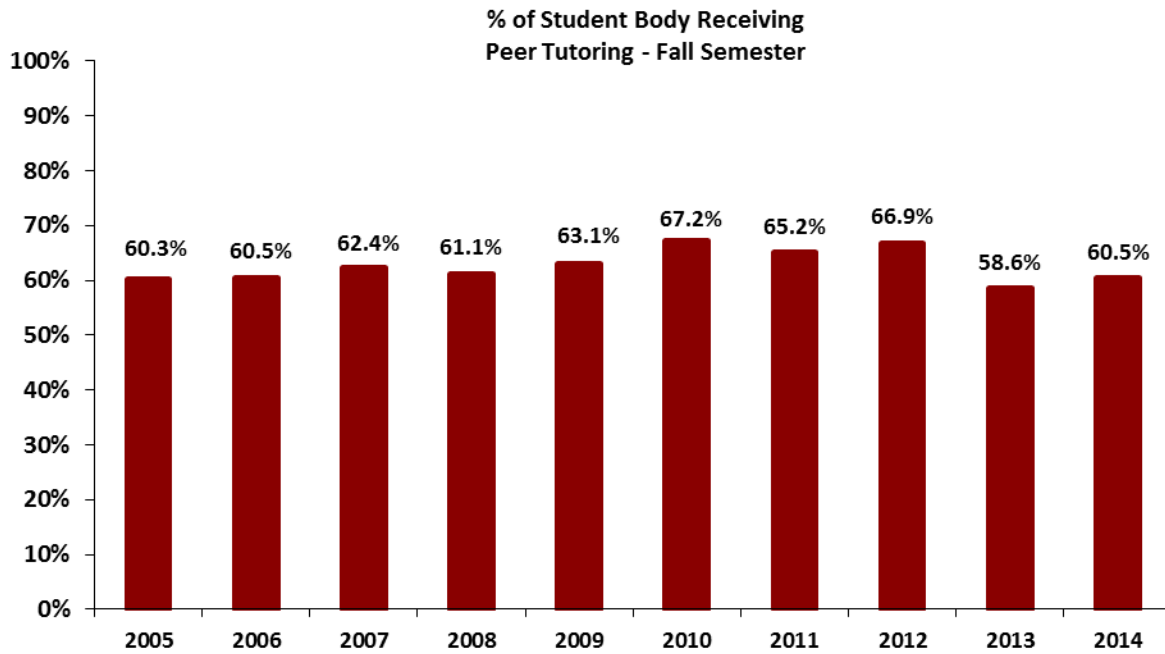
CO-CURRICULAR PARTICIPATION – Spring Service Projects

Spring Service Project Participation	2011	2012	2013	2014	2015
<i>2nd Mile Ministries/Jacksonville, FL</i>		9	7		9
<i>Arrive Ministries/Richfield, MN</i>				4	
<i>Calvary Commission/Lyndale, TX</i>	12	16	16	16	14
<i>Cary Christian Center/Cary, MS</i>	16	16	18	17	18
<i>City Youth Ministries/Jonesboro, AR</i>	18	18	18	17	18
<i>Coldwater Foundation, Grand Marais, MN</i>					7
<i>Crescent Project/Minneapolis, MN</i>	9				
<i>CRWRC/Biloxi, MS</i>	8				
<i>Emmanuel Reformed Church/Los Angeles, CA</i>			9	23	8
<i>First Reformed Church/Denver, CO</i>	8				
<i>Fordham Manor/Highbridge Reformed Church/NY, NY</i>					
<i>Hope for Opelousas/Opelousas, LA</i>	15	17	19	17	18
<i>HOPE International/Dominican Republic</i>	12				
<i>IDSIM Office, Moravian Church/Blue Fields, Nicaragua</i>	13	12	12	11	13
<i>Jackson County Ministries/Annville, KY</i>	6				8
<i>Mendenhall Ministries/Mendenhall, MS</i>	10				
<i>Mile High Ministries/Denver, CO</i>				8	
<i>Miracle Hill Ministries/Spartanburg, SC</i>	8	9			
<i>Misson Road Ministries/San Antonio, TX</i>	8				
<i>Mount Olive Ministries/Mt. Olive, MS</i>					20
<i>Mt. Rose Community Church/Grand Portage, MN</i>		8	7	8	
<i>Shelter Youth Hostels/Amsterdam, Netherlands</i>	12	12	12	12	11
<i>United Christians International/Haiti</i>		12	12	12	12
<i>Urban Impact Ministries/New Orleans, LA</i>		17	17	19	17
<i>Urban Ventures/Minneapolis, MN</i>				8	9
<i>World Relief – SALT/Richfield, MN</i>		7	9		
<i>Voice of Calvary Ministries/Jackson, MS</i>	15	18	18		
Total Participants:	170	171	174	172	182

CO-CURRICULAR PARTICIPATION – Summer of Service

Summer of Service Participation	2011	2012	2013	2014	2015
<i>Africa Inland Mission</i>	5			1	
<i>Cary Christian Center, Cary, MS</i>				1	
<i>Children of the Promise, Haiti</i>			2	1	3
<i>Christian Missionary Fellowship</i>		2			
<i>Cornerstone City Church, Ireland</i>			1		
<i>Every Child Ministries</i>	1				
<i>For God's Children International</i>	1				
<i>Greek Bible College, Greece</i>			2		
<i>HOPE International, Romania</i>	1				
<i>Inca Link International, Ecuador</i>		3			
<i>International Messengers, Ukraine</i>	1				
<i>International Teams</i>	1	2	2	6	4
<i>Luke Society</i>	1	2	3	3	4
<i>Mile High Ministries, Denver, CO</i>	3	1	1		1
<i>New Horizons Foundation</i>			1		
<i>Pioneers</i>	1	4	3	3	1
<i>Rahab's Rope, India</i>		2	2	2	2
<i>RCA, Grand Rapids, MI</i>		1			
<i>Samuel Christian School, South Korea</i>					1
<i>Shelter Youth Hostels, Amsterdam</i>				2	
<i>TEAM Serve, Ireland</i>				1	1
<i>Urban Impact Ministries</i>		1			
<i>WEC International</i>			1		
<i>Word for the World, India (via Bryan College)</i>	1	1			2
<i>World Indigenous Mission</i>		2			
<i>World Team, Trinidad & Tobago</i>	1				
<i>Wycliffe Bible Translators</i>	1	1			
<i>Wycliffe Discovery</i>		1			
Total Participants:	18	23	18	20	19

ACADEMIC SUPPORT – Peer Tutoring and Academic Alerts



PERSONNEL – Faculty and Staff Demographic Profile

	2011	2012	2013	2014	2015
Total Faculty:	134	126	140	138	145
Full Time Faculty	85	84	84	83	82
<i>% of Total Faculty</i>	63.4%	66.7%	60.0%	60.1%	56.6%
Part Time Faculty	49	42	56	55	63
<i>% of Total Faculty</i>	36.6%	33.3%	40.0%	39.9%	43.4%
Full Time Male	53	53	52	51	51
<i>% of Full Time Faculty</i>	62.4%	63.1%	61.9%	61.4%	62.2%
Full Time Female	32	31	32	32	31
<i>% of Full Time Faculty</i>	37.6%	36.9%	38.1%	38.6%	37.8%
Part Time Male	19	15	17	19	20
<i>% of Part Time Faculty</i>	38.8%	35.7%	30.4%	34.5%	31.7%
Part Time Female	30	27	39	36	43
<i>% of Part Time Faculty</i>	61.2%	64.3%	69.6%	65.5%	68.3%
Tenured	50	49	54	54	52
<i>% of Full Time Faculty</i>	58.8%	58.3%	64.3%	65.1%	63.4%
<i>Male</i>	37	35	38	36	34
<i>Female</i>	13	14	16	18	18
Tenure Track	29	29	24	25	22
<i>% of Full Time Faculty</i>	34.1%	34.5%	28.6%	30.1%	26.8%
<i>Male</i>	14	13	11	13	11
<i>Female</i>	15	16	13	12	11
Term Appointment	6	6	6	4	8
<i>% of Full Time Faculty</i>	7.1%	7.1%	7.1%	4.8%	9.8%
<i>Male</i>	3	2	2	1	5
<i>Female</i>	3	4	4	3	3
Terminal Degree	67	68	68	69	71
<i>% of Full Time Faculty</i>	78.8%	81.0%	81.0%	83.1%	86.6%
<i>Male</i>	47	44	47	44	44
<i>Female</i>	20	24	21	25	27
No Terminal Degree	18	16	16	14	11
<i>% of Full Time Faculty</i>	21.2%	19.0%	19.0%	16.9%	13.4%
<i>Male</i>	6	6	6	6	6
<i>Female</i>	12	10	10	8	5
Professors	29	32	32	34	34
<i>% of Full Time Faculty</i>	34.1%	38.1%	38.1%	41.0%	41.5%
<i>Male</i>	22	25	25	27	25
<i>Female</i>	7	7	7	7	9
Associate Professors	18	15	21	19	15
<i>% of Full Time Faculty</i>	21.2%	17.9%	25.0%	22.9%	18.3%
<i>Male</i>	14	10	11	9	8
<i>Female</i>	4	5	10	10	7

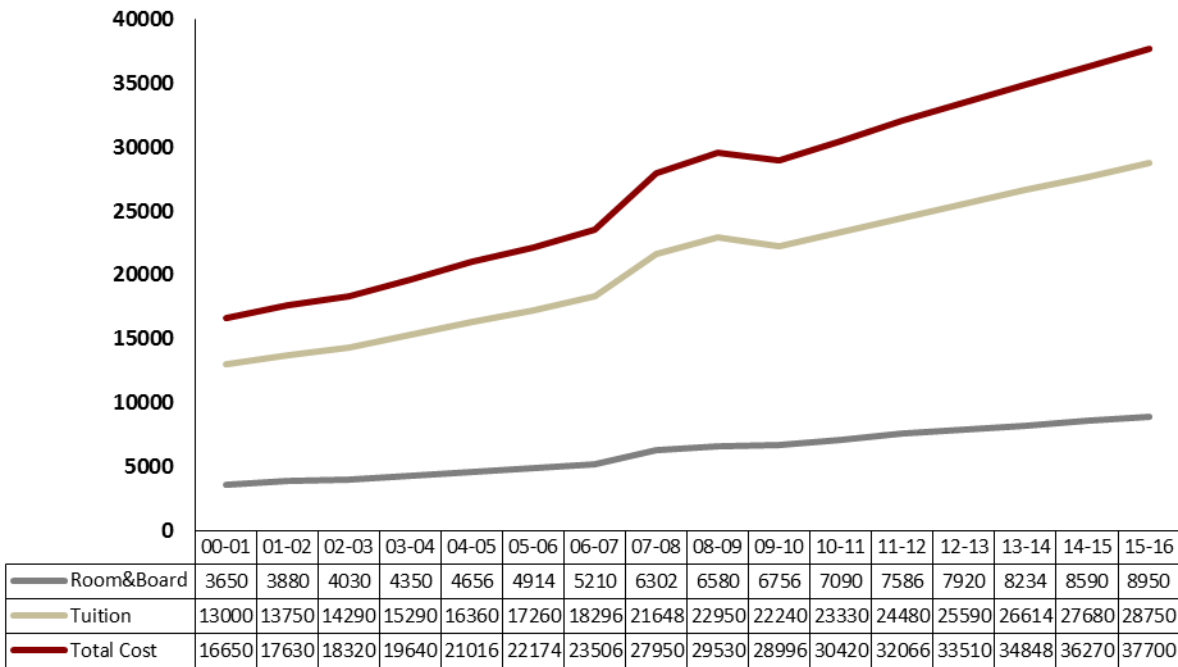
PERSONNEL – Faculty and Staff Demographic Profile

	2011	2012	2013	2014	2015
Assistant Professors	20	21	15	16	21
<i>% of Full Time Faculty</i>	23.5%	25.0%	17.9%	19.3%	25.6%
<i>Male</i>	12	12	10	9	12
<i>Female</i>	8	9	5	7	9
Instructors	18	19	16	14	12
<i>% of Full Time Faculty</i>	21.2%	22.6%	19.0%	16.7%	14.6%
<i>Male</i>	6	9	6	6	6
<i>Female</i>	12	10	10	8	6
Total Staff:	179	180	178	178	178
Full Time	113	113	111	115	113
<i>% of Total Staff</i>	63.1%	62.8%	62.4%	64.6%	63.5%
Part Time	66	67	67	63	65
<i>% of Total Staff</i>	36.9%	37.2%	37.6%	35.4%	36.5%
Male	96	104	101	97	102
<i>% of Total Staff</i>	53.6%	57.8%	56.7%	54.5%	57.3%
Female	83	76	77	81	76
<i>% of Total Staff</i>	46.4%	42.2%	43.3%	45.5%	42.7%
Total Employees:	313	306	318	316	323

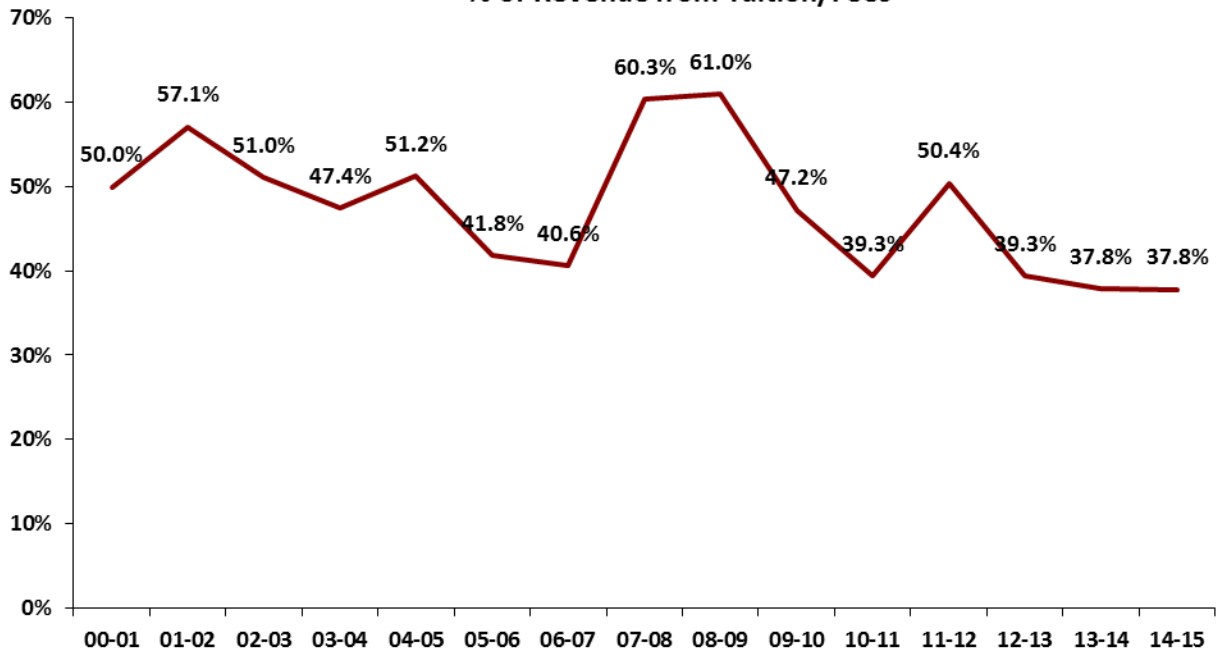
Data provided by the NWC Human Resources department.

FINANCIAL TRENDS – Costs and Tuition Dependency

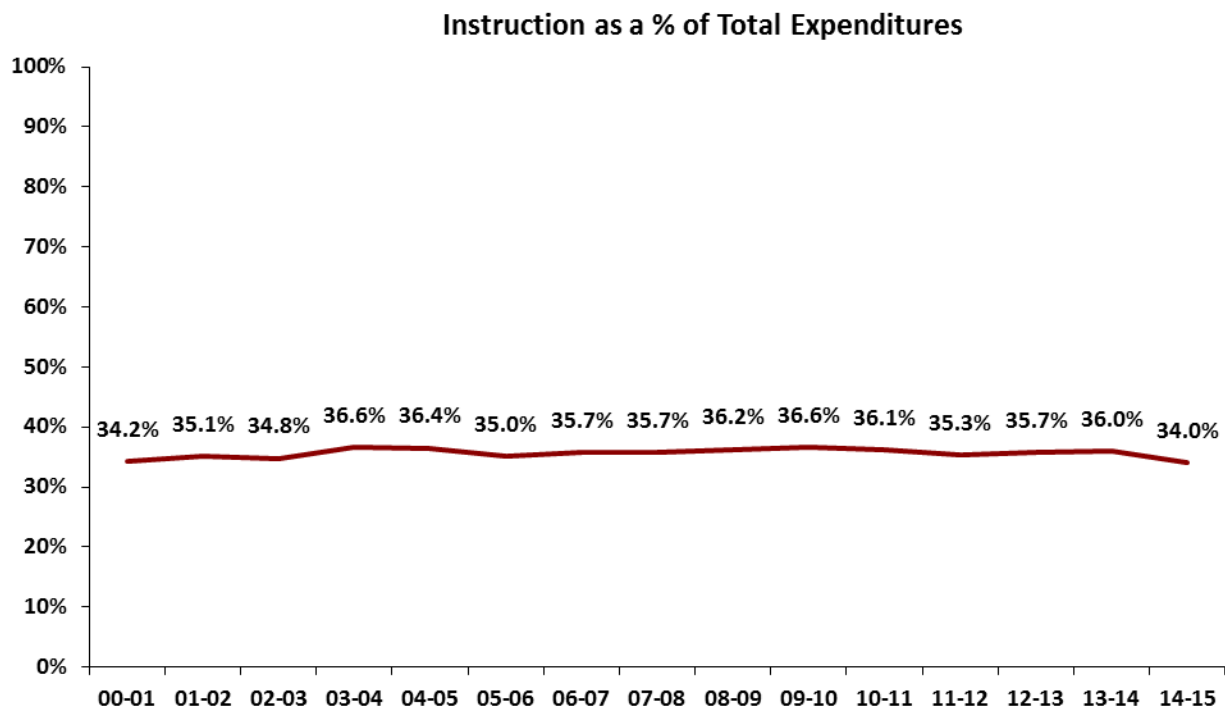
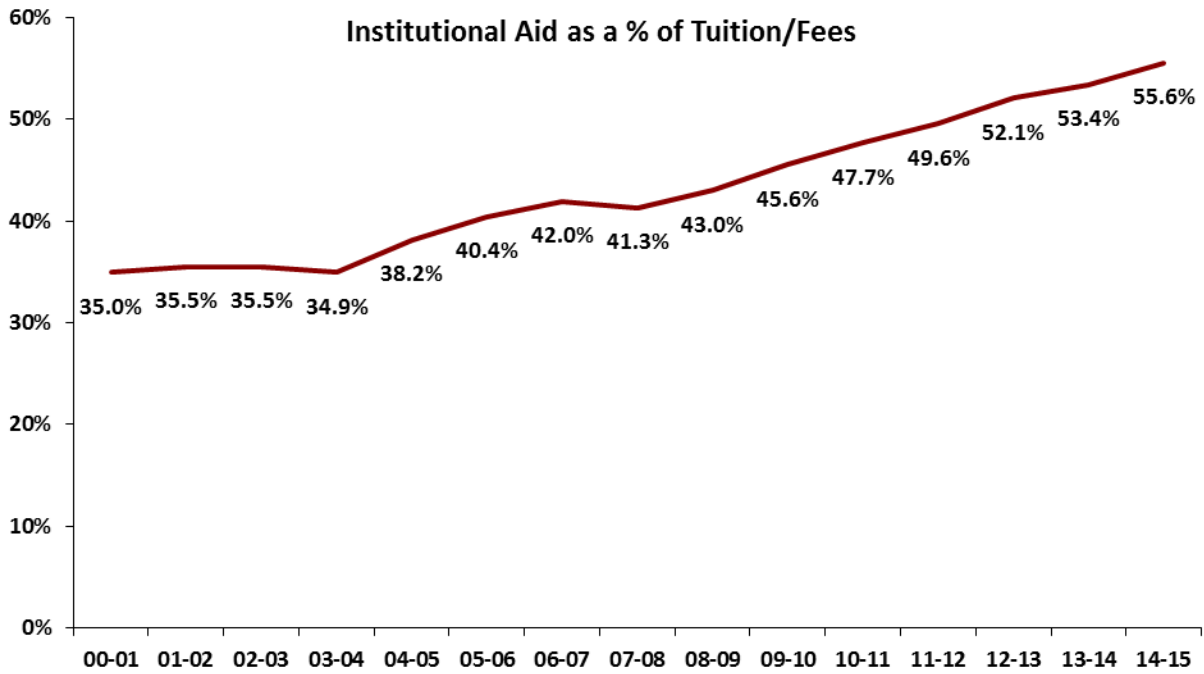
Yearly Cost of Tuition, Room, and Board



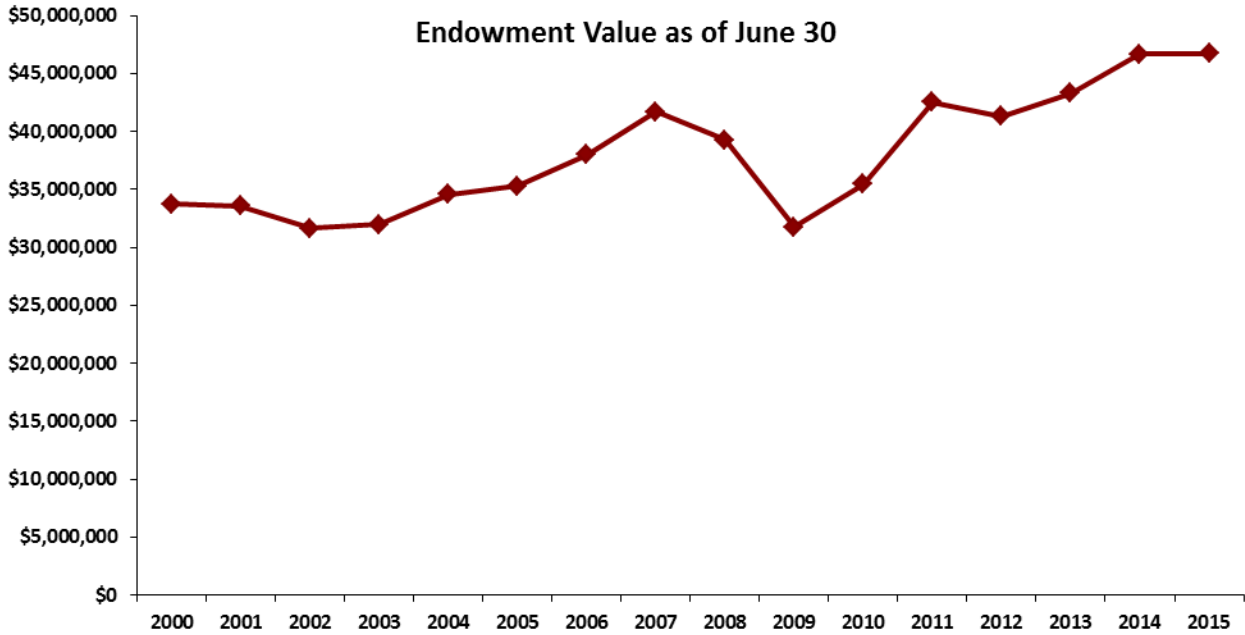
% of Revenue from Tuition/Fees



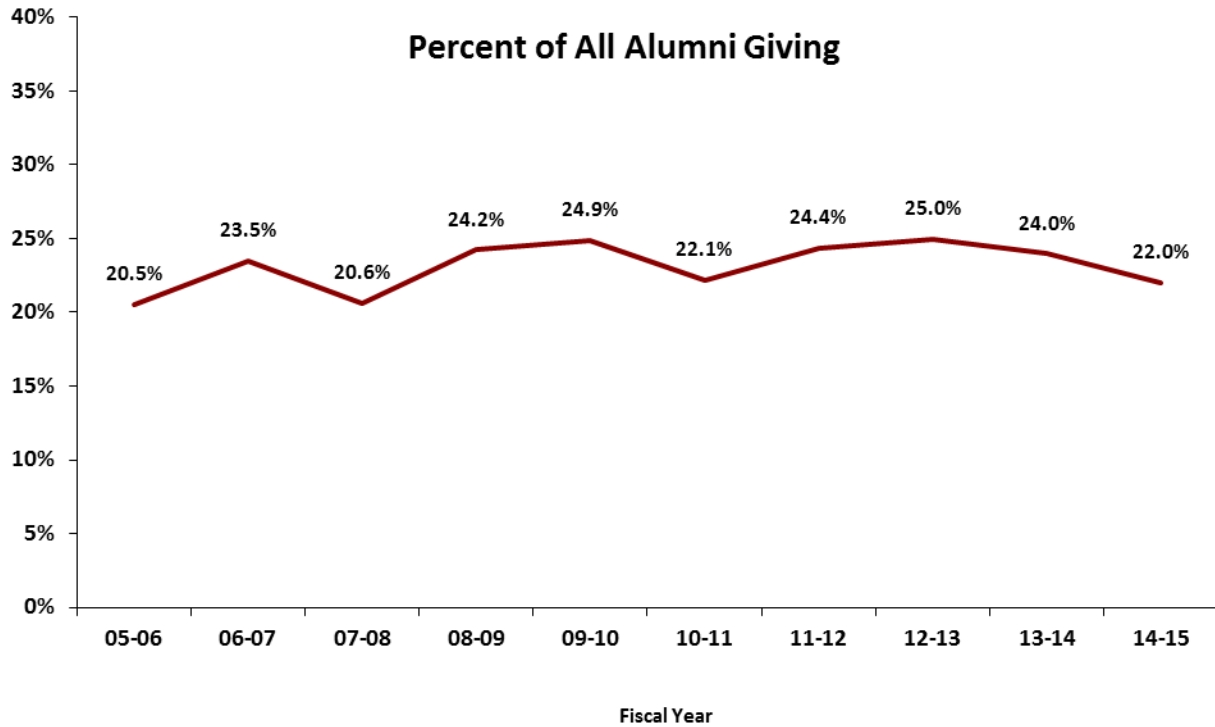
FINANCIAL TRENDS – Institutional Aid and Instructional Expenditure



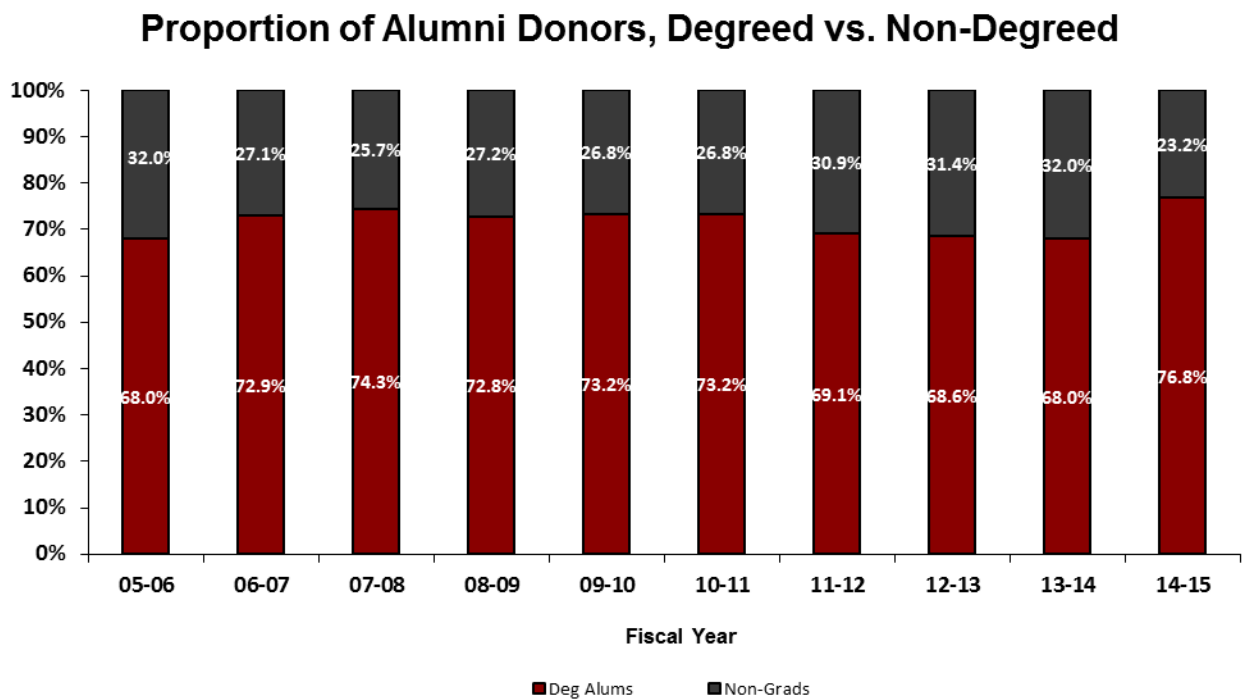
FINANCIAL TRENDS – Endowment Value



FINANCIAL TRENDS – Alumni Giving



Note: All figures reflect alumni with viable addresses solicited for the respective years.



FINANCIAL TRENDS – Alumni Giving

Average Giving Amount of Alumni

	10-11	11-12	12-13	13-14	14-15
# of Degreed Alumni who gave	1588	1694	1792	1712	1689
Total Gifts from Degreed Alumni	\$484,213	\$789,408	\$872,980	\$1,195,315	\$1,255,825
Average Degreed Alum Gift	\$304	\$466	\$487	\$698	\$743
# of ALL Alumni who gave	2169	2453	2613	2517	2199
Total Gifts from ALL Alumni	\$887,011	\$1,369,982	\$1,331,456	\$1,869,801	\$1,698,013
Average Gift from ALL Alumni	\$408	\$558	\$509	\$742	\$772